



# TOWN RENTALS



01323 417700



3 Bedroom

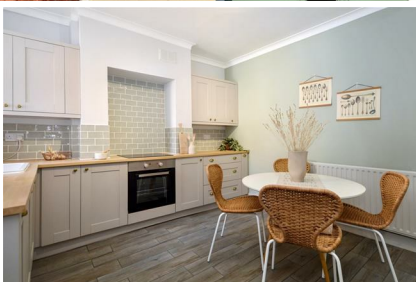


2 Reception



1 Bathroom

## £1,500 PCM



### 26 Firle Road, Eastbourne BN22 8DU

**\*\* AVAILABLE NOW\*\*** Town Rentals are delighted to offer this well presented three bedroom terrace house offering an open plan modern kitchen/ dining room, courtyard garden, modern downstairs bathroom, three bedrooms, gas central heating and double glazing. This property is enviably situated within walking distance of Eastbourne's town centre, seafront and train station, local amenities, bus routes and schools.

26 Firle Road, Eastbourne BN22 8DU

£1,500 PCM

## Main Features

- 3 Bedroom House
- Downstairs Bathroom
- Pretty Rear Courtyard
- Modern Kitchen/ Diner
- Upstairs WC
- HOLDING DEPOSIT: £1730
- TENANCY DEPOSIT: £346
- COUNCIL TAX BAND: B
- 12 MONTH INITIAL TENANCY TERM
- EPC: D

## Entrance

Radiator, open to-

## Living Room

Carpet, feature fire place, window to the front and radiator.

## Kitchen & Dining Area

Range of floor and wall mounted units, electric oven and hob, integrated dishwasher, part tiled walls and door to-

## Utility area

Space for washing machine and tumble dryer, door onto the garden and door to-

## Bathroom

Tiled floor, window to rear, cupboard housing boiler, heated towel rail. Sink with vanity unit under. Bath with a shower attachment and part tiled walls.

## Courtyard Garden

Gravel, 2 x storage cupboard and gate to rear access.

Stairs from ground floor to first floor landing doors to

## Bedroom 3

Carpet, radiator and window to rear.

## WC

Tiled floor, part tiled walls, WC with sink above and window to the side.

## Bedroom 2

Carpet, feature fireplace, storage area, radiator and window to rear.

## Bedroom 1

Carpet, feature fireplace., radiator and window to the front.

## Other Information

**\*\*Whilst we make every effort to ensure these details are accurate, we are unable to check telephone and TV connection points, inspect loft access or check the working condition of appliances. To a large extent we do rely on the information provided by the landlord. Contractual obligations may require the rent, holding deposit and tenancy deposit to differ in price than what is outlined above\*\***

