



Catterick Close, N11

£1,100,000

An excellently finished, fully detached modern built four bedroom family home arranged over three floors complimented by three generous sized bathrooms, a sit and dine kitchen area with well designed conservatory with dual aspect views onto greenery, off-street parking and a integrated garage.

This house is set in a sought - after development, close to Tesco Superstore, Friern Bridge Retail Park, New Southgate mainline, Arnos Grove underground station and recreational parkland including Coppets Wood Nature Reserve and The Secret Park.

Features

- Detached
- Four Bedrooms
- Three Bathrooms
- Garage
- Off-Street Parking
- Chain Free



Catterick Close, N11

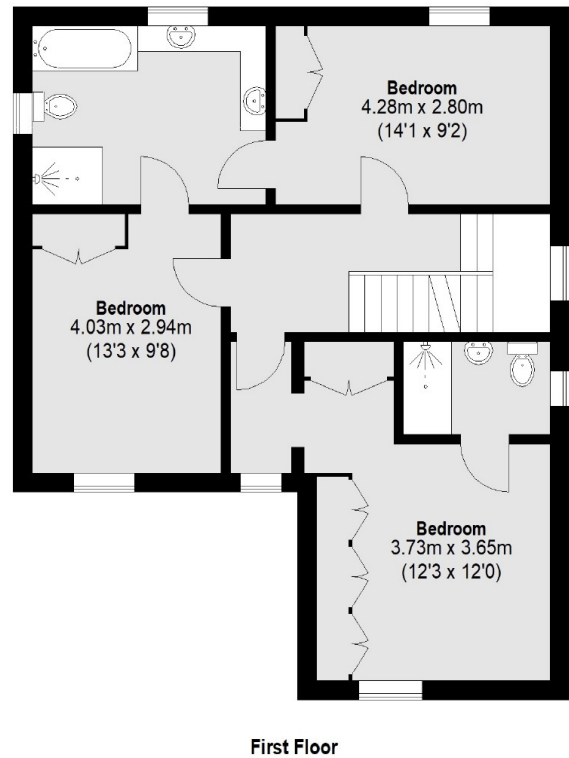
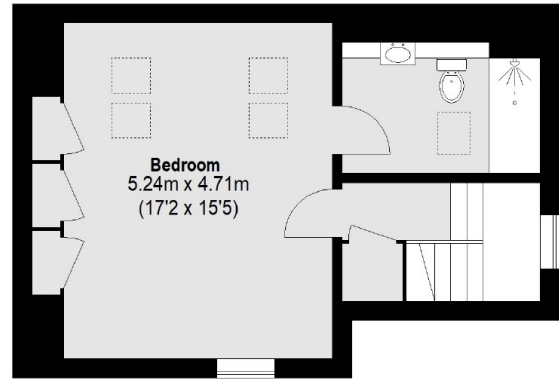
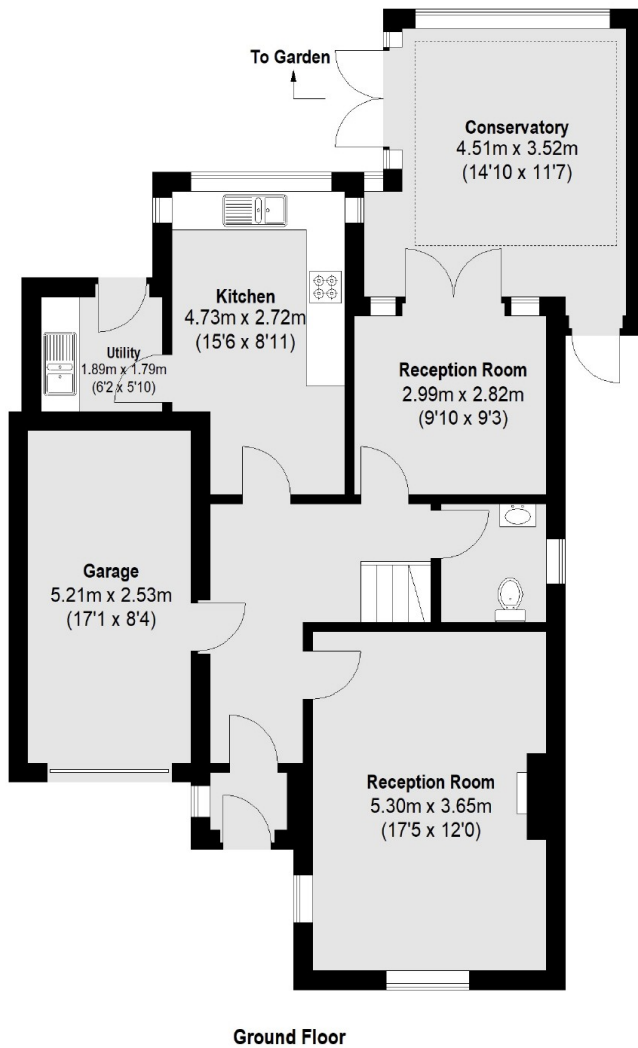
On entrance to the property, you are greeted by a generous sized hallway which has internal access to the garage and a well laid marble floor. Off of the hallway, the ground floor boasts a recently fitted kitchen with glass porcelain tiles, a spacious reception room, a guest W/C, and a second reception room leading on to a large conservatory.

On the first floor, the property offers three double bedrooms, one of which benefits from it's own en suite bathroom. The first floor also offers a shared family bathroom.

The second floor comprises a large double bedroom with an en-suite and fitted wardrobes perfect for storage.



Catterick Close, London, N11



Total area (approx.): 201.66 sq. m (2171 Sq. ft)
(Including Garage)