



Princes Avenue, N22

£575,000

This period style, two bedroom, ground floor maisonette with direct access to a west facing private garden is being sold on a chain free basis. The flat is comprised of a well sized separate reception and an additional, generously sized dining room off the kitchen.

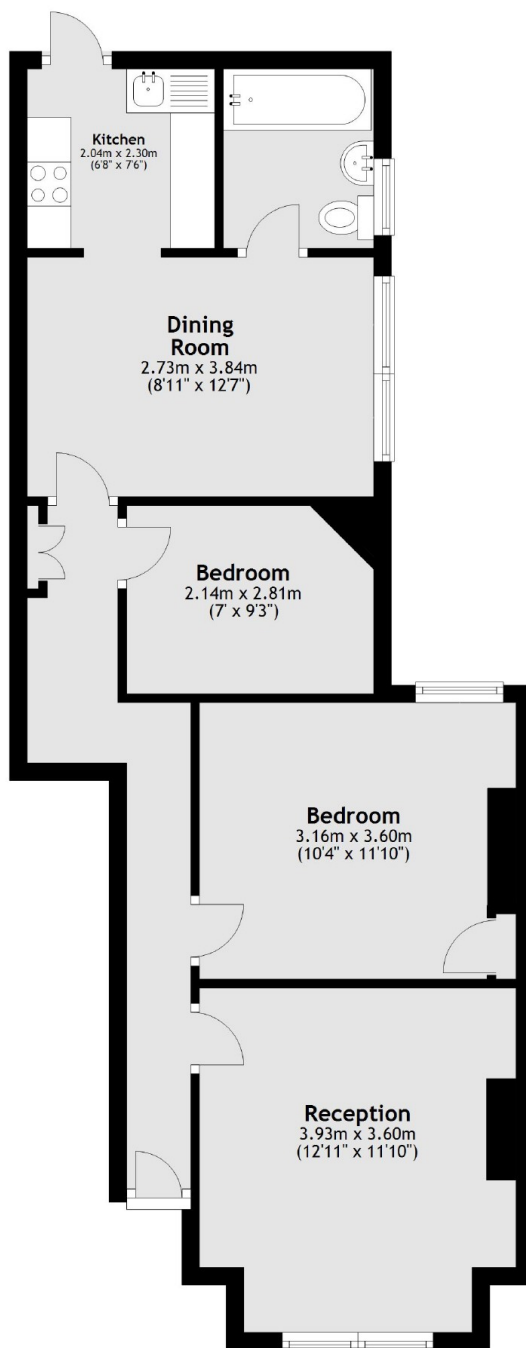
Situated within a short distance of Alexandra Park and its main line station with easy connections to the City (Moorgate and Old Street), also close at hand is Bounds Green tube station (Piccadilly Line). Within catchment of Alexandra Park secondary school.

Features

- Two Bedrooms
- One Bathroom
- Ground Floor
- Direct Access to Garden
- Period Features
- Chain Free

Princes Avenue, London, N22

Ground Floor



Total area: approx. 58.8 sq. metres (632.6 sq. feet)