



## Queens Avenue, N10

### £430,000

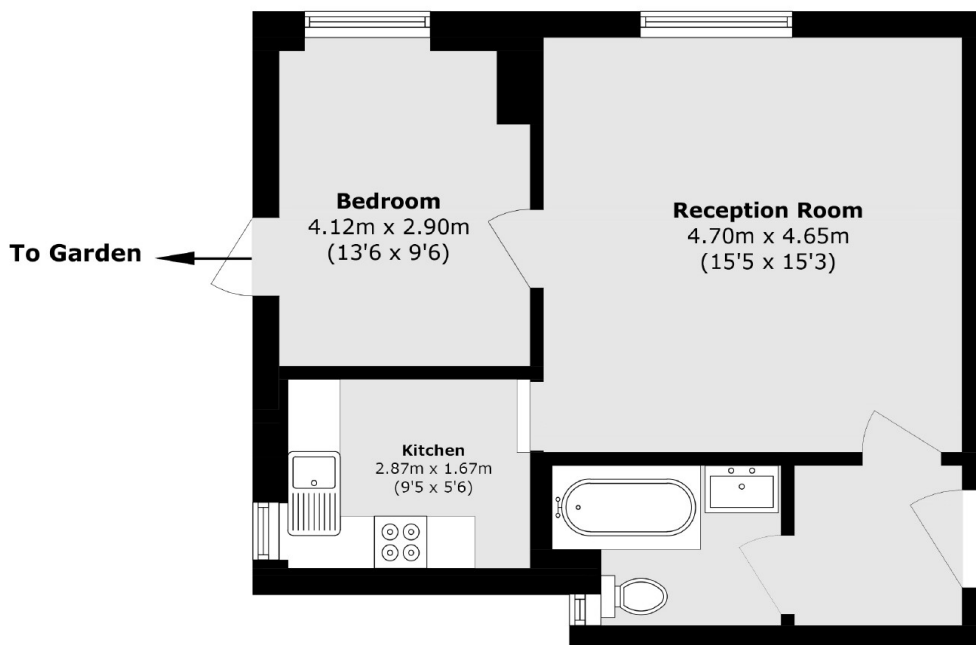
This grand Edwardian one bedroom conversion is situated on the ground and on the quiet side of the building, with direct access onto a large, well-groomed, mature garden.

Queens Avenue is one of the most central and sought-after roads in Muswell Hill, meters from the Broadway with places to eat, shop, and drink. Bus links to Finsbury Park, Highgate, and Hornsey provide quick access into the City, while the open green spaces of Highgate Woods and Alexandra Palace are all within one mile.

### Features

- One Bedroom
- Ground Floor
- Shared Garden
- Long Lease
- Chain Free
- Period Building

# Queens Avenue, London, N10



Total area (approx.): 50.2 sq. m (540.3 sq. ft)