



Osier Crescent, N10

£3,300 Per calendar month

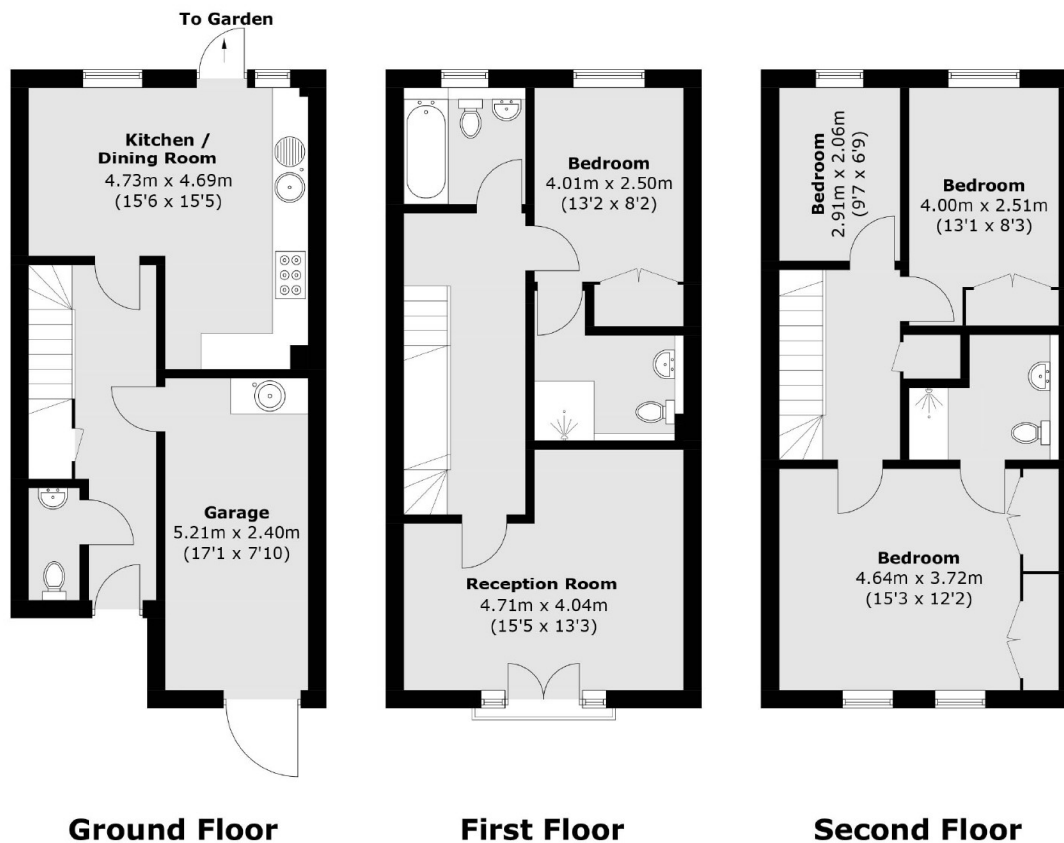
This four bedroom terraced house is perfect for a family and conveniently located on a quiet residential development in Muswell Hill. Arranged over three floors with a separate kitchen, dining room, reception room, two bathrooms, private garden and off-street parking.

Located within the catchment areas for local schools in Muswell Hill, the property is ideal for a family seeking a long tenancy and easy access to East Finchley Tube station.

Features

- Four Bedroom House
- Private Garden
- Separate Kitchen
- Dinning Room
- Three Bathrooms
- Private Parking

Osier Crescent, London, N10



Total area (approx.): 139.5 sq. m (1,501.6 sq. ft)
(Including Garage)