



Alexandra Park Road, N10

£600,000

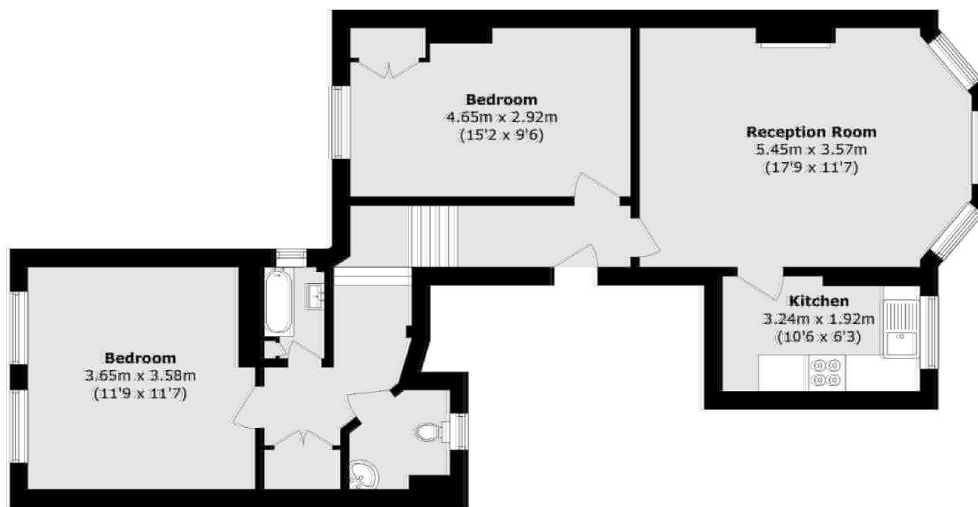
This recently refurbished first-floor conversion flat offers a blend of period charm and modern living. The property features a separate, fully fitted kitchen and a bright lounge area enhanced by an attractive period fireplace. Two generously sized double bedrooms, both with large sash windows and two bathrooms.

Situated within walking distance of Muswell Hill Broadway. Also close by is Alexandra Park and Palace with connections to the City (Moorgate and Old Street), within catchment of outstanding local schools

Features

- Two Double Bedrooms
- Two Bathrooms
- First Floor Flat
- Period Features
- Recently Refurbished
- Lots of Natural Light

Alexandra Park Road, London, N10



Total area (approx.): 69.6 sq. m (749.2 sq. ft)