



Osier Crescent, N10

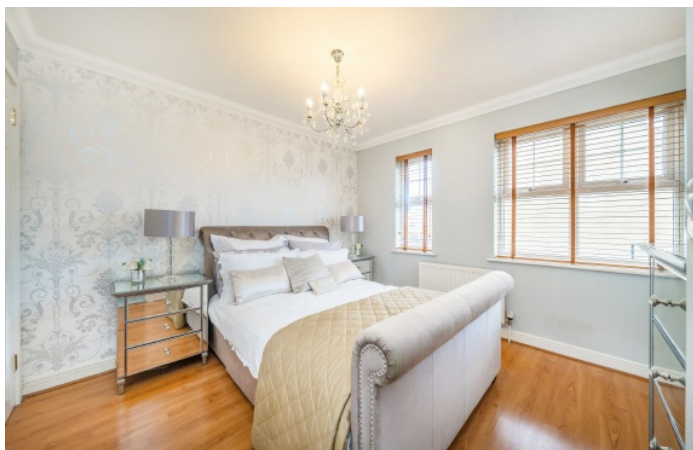
£975,000

This substantial four bedroom family residence, featuring three bathrooms, extends across four floors and offers 2193 square feet of living accommodation.

Osier Crescent is ideally situated close to Muswell Hill Broadway with its vast array of shops, bars, cafes & restaurants and positioned within the catchment area of some of Muswell Hill's best schools, parks and open spaces.

Features

- Four Bedrooms
- Garage
- Utility Room
- Three Bathrooms
- Three Tier Garden
- Great School Catchment

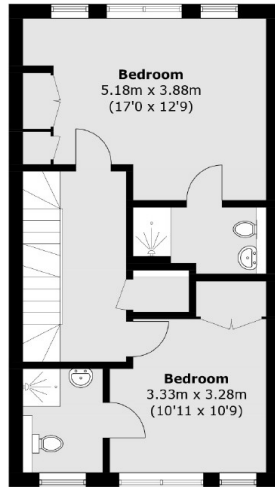


Osier Crescent, N10

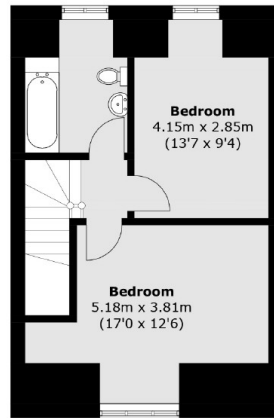
The property presents exceptional value and includes two reception rooms, a utility room, and a garage with conversion potential, further enhanced by the convenience of two separate entrances.



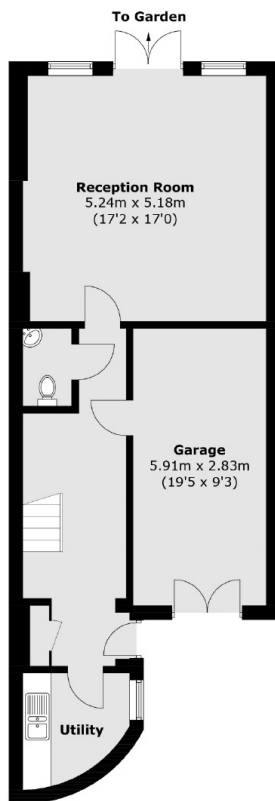
Osier Crescent, London, N10



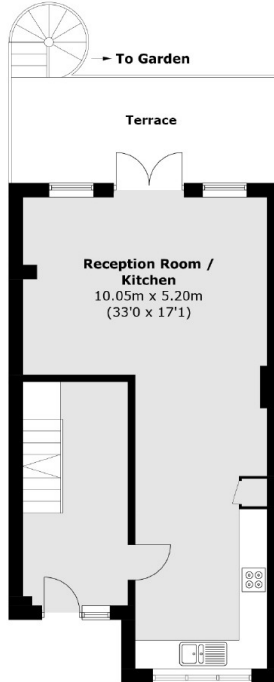
Second Floor



Third Floor



Ground Floor



First Floor

Total area (approx.): 203.8 sq. m (2193.5 sq. ft)
Terrace (approx.): 14.9 sq. m (160 sq. ft)