

Myddleton Road, N22

£425,000

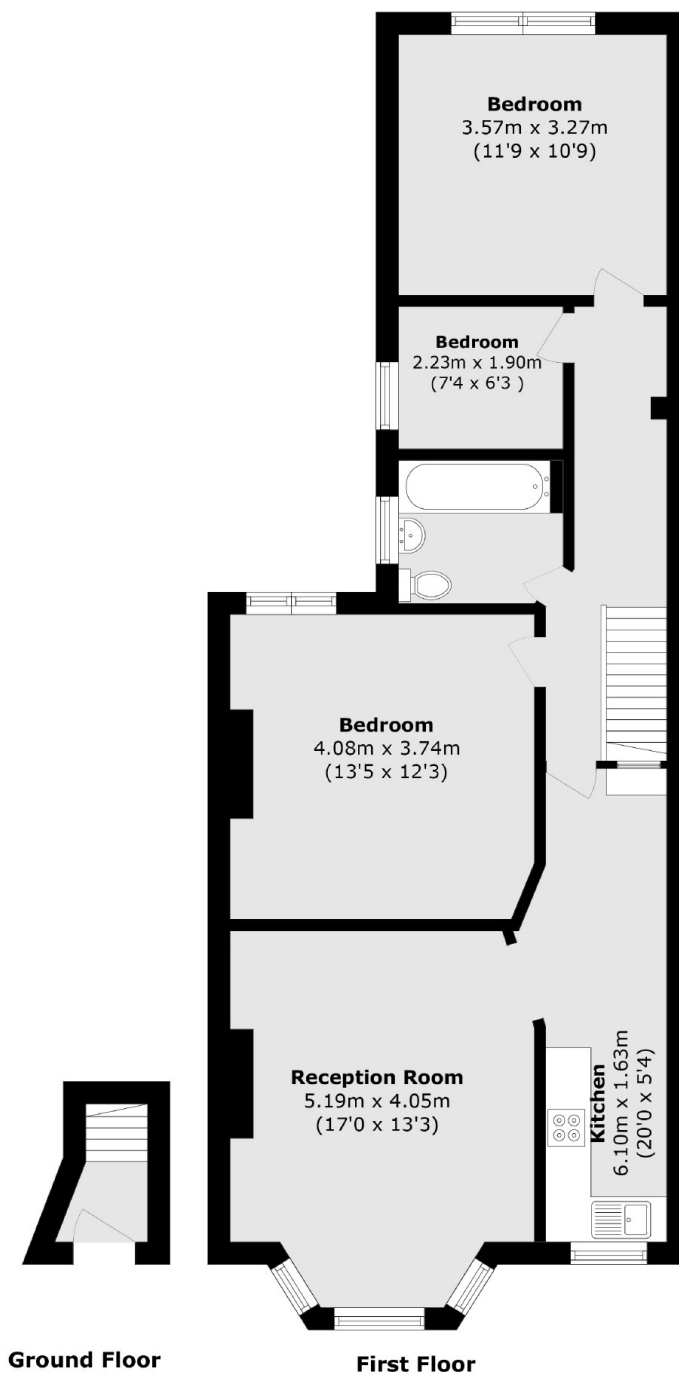
Situated on the first floor of this converted Edwardian house is this charming, three bedroom flat benefitting from two double bedrooms, a modern bathroom, a large reception room and a separate kitchen. Offered on a chain free basis, this property is ideal for first time buyers who have the potential to extend in to the loft (STPP).

This property is situated on a quiet residential road in the Bounds Green/Wood Green area, offering easy access to numerous local amenities. It also benefits from excellent transport links via Bounds Green station and several nearby bus routes.

Features

- Three Bedrooms
- Double Glazing
- Chain Free
- Potential To Extend (STPP)
- Great Transport Links
- First Floor

Myddleton Road, London, N22



Total area (approx.): 79.8 sq. m (858.9 sq. ft)