



Telford Road, N11

£415,000

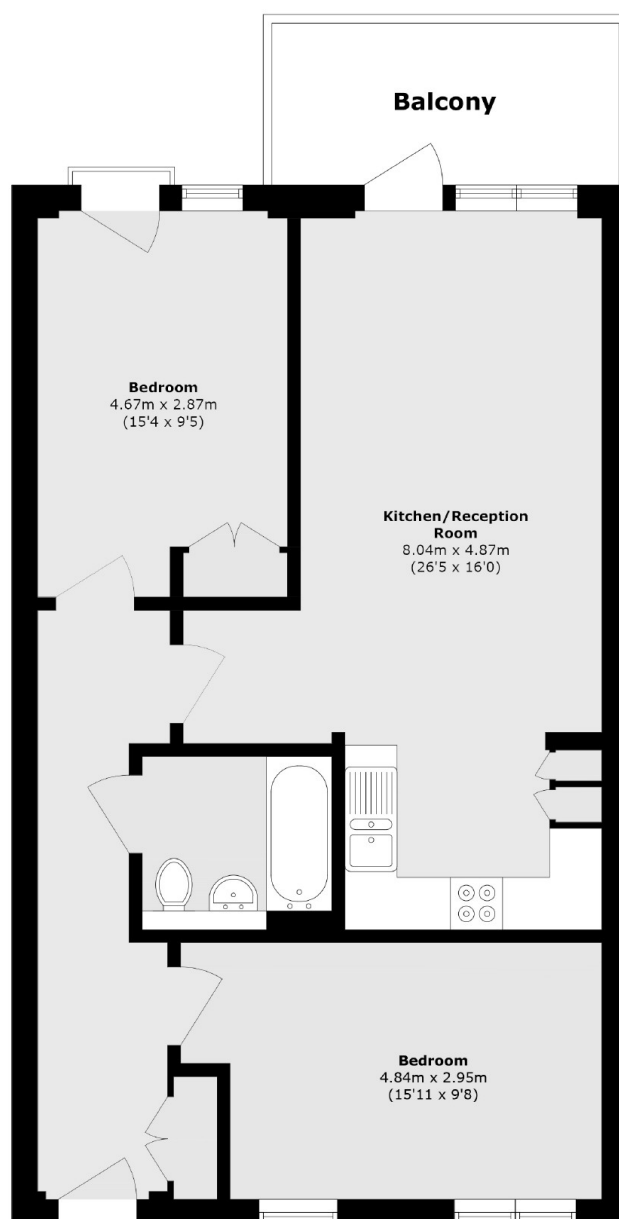
Located on the top floor of Coral Court is this spacious, two double bedroom flat. Presented in immaculate condition with an open plan kitchen/living space, this property also benefits from a generously sized balcony, good sized bathroom and an allocated parking space within a gated premises.

Located in the residential pocket of New Southgate, this property is situated nearby to both Bethune Park and Friary Park. There are also great local transport links such as New Southgate Station as well as Bounds Green and Arnos Grove underground stations.

Features

- Two Bedrooms
- Gated Parking
- Lift Assisted
- Double Glazing
- Balcony
- Transport Links

Telford Road, London, N11



Total area (approx.): 73.6 sq. m (792.2 sq. ft)

Balcony area (approx.): 7.4 sq. m (79.6 sq. ft)

Dexters

Muswell Hill
418 Muswell Hill Broadway
London
N10 1DJ
Sales
020 8444 2388

Energy Rating: . We aim to make our particulars both accurate and reliable. However they are not guaranteed; nor do they form part of an offer or contract. If you require clarification on any points then please contact us, especially if you're traveling some distance to view. Please note that appliances and heating systems have not been tested and therefore no warranties can be given as to their good working order.

 **RICS** | Regulated
Estate Agent
and Letting Agent

dexters.co.uk