



Alexandra Park Road, N10

£325,000

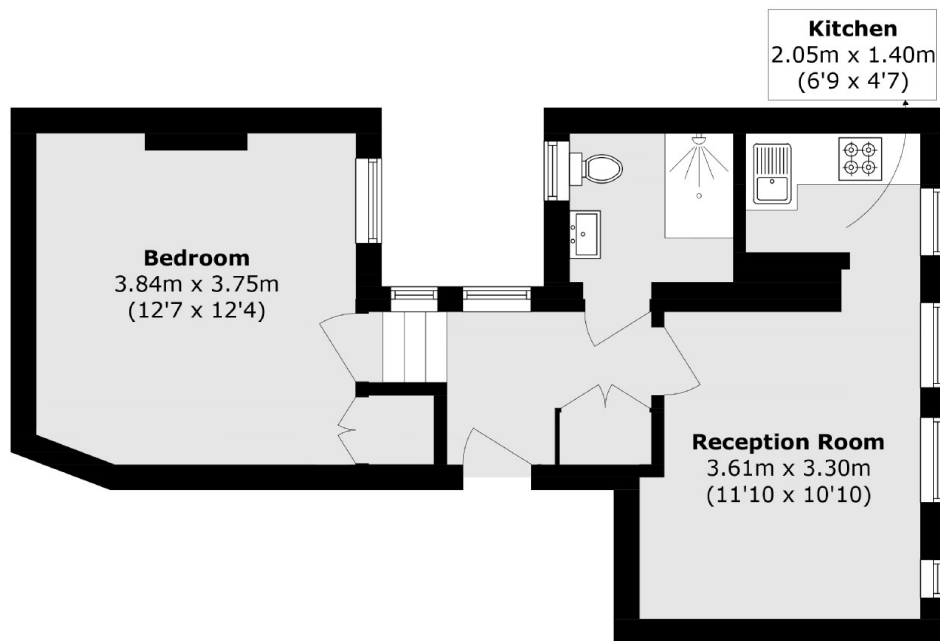
Situated on the second floor of a period building is this one bedroom flat. Arranged across one level, this property benefits from a spacious double bedroom, a large reception room with a separate kitchen space. Consisting of double glazed windows and modern bathroom and kitchen, this property is ideal for a first time buyer or buy to let investor.

Situated within catchment of Rhodes Avenue primary and Alexandra Park secondary schools, close to Bounds Green tube station (Piccadilly Line), Alexandra Palace with its main line station to Moorgate and Old Street. Muswell Hill Broadway is also a short distance away.

Features

Second Floor
One Bedroom
Double Glazing
School Catchment
Chain Free
Period Conversion

Alexandra Park Road,
London, N10



Total area (approx.): 41.0 sq. m (441.3 sq. ft)