



## Royal Drive, N11

### £600,000

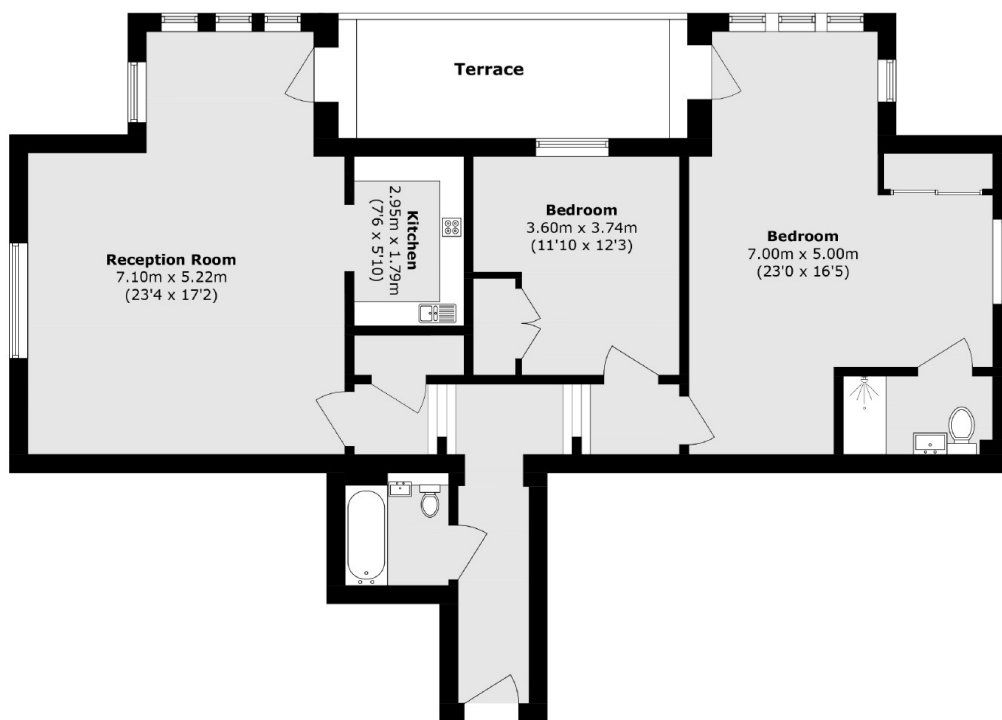
Presented in excellent condition, this bright and well-designed two double-bedroom flat is situated on the third floor of the apartment complex. The property benefits from a large bathroom, in addition to an en suite in the main bedroom, and a private terrace space.

The gated community offers allocated parking, lift access and 24-hour security. There is also an air-conditioned gym, spa area, and tennis courts. Transport links include New Southgate Station (National Rail) and Arnos Grove Underground Station (Piccadilly Line).'

### Features

- Two Bedrooms
- Two Bathrooms
- Gated Development
- Private Balcony
- Third Floor
- Allocated Parking

# Royal Drive, London, N11



Total area (approx.): 98.3.0 sq. m (1058.1 sq. ft)

Terrace area (approx.): 11.3 sq. m (121.6 sq. ft)

## Dexters

Muswell Hill  
418 Muswell Hill Broadway  
London  
N10 1DJ  
Sales  
020 8444 2388

Energy Rating: . We aim to make our particulars both accurate and reliable. However they are not guaranteed; nor do they form part of an offer or contract. If you require clarification on any points then please contact us, especially if you're traveling some distance to view. Please note that appliances and heating systems have not been tested and therefore no warranties can be given as to their good working order.

 **RICS** | Regulated  
Estate Agent  
and Letting Agent

[dexters.co.uk](https://www.dexters.co.uk)