



## Risborough Close, N10

£2,500 Per calendar month

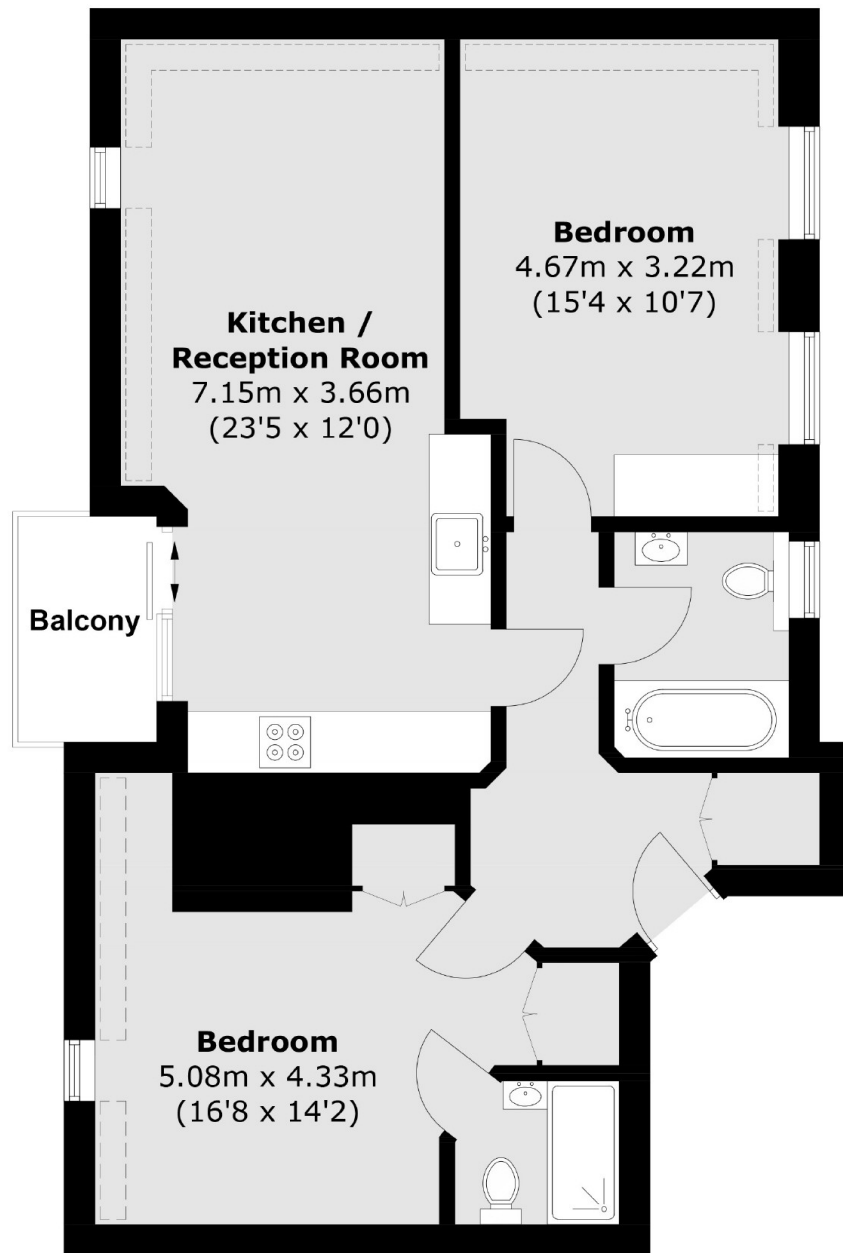
An incredible brand newly refurbished two bedroom apartment. The property is on the top floor of this impressive purpose built block in Muswell Hill. The property has a modern open plan kitchen, good size reception, two double bedrooms with great storage and a modern bathroom. There is a spacious terrace with outstanding views that overlook London Skyline.

Excellent location just off Muswell Hill Broadway which has a selection of restaurants, local independent shops and supermarkets. Alexandra Park and outstanding schools located near by.

### Features

- Brand New Apartment
- Two Double Bedrooms
- Modern Open Plan Kitchen
- Wood Floors in Reception Room
- Private Balcony
- Incredible Views
- Fourth Floor via Lift
- Muswell Hill

Risborough Close,  
London, N10



**Third Floor**

Total area (approx.): 69.4 sq. m (747.0 sq. ft)  
Balcony : 2.8 sq. m (30.1 sq. ft)

**Dexters**

Muswell Hill  
418 Muswell Hill Broadway  
London  
N10 1DJ  
Lettings  
020 8444 9914

Energy Rating: B. We aim to make our particulars both accurate and reliable. However they are not guaranteed; nor do they form part of an offer or contract. If you require clarification on any points then please contact us, especially if you're traveling some distance to view. Please note that appliances and heating systems have not been tested and therefore no warranties can be given as to their good working order.

**RICS** Regulated  
Estate Agent  
and Letting Agent

dexters.co.uk