



Montmorency Gardens, N11

£2,100 Per calendar month

Dexters



Montmorency Gardens, N11

This modern two bedroom apartment set within new development of Montmorency Park located in New Southgate. As you enter the flat you have a hallway with built-in storage/utility cupboard. There is a modern open plan kitchen with a bright reception room leading to balcony. Two modern bathrooms (one en suite from the master bedroom), two double bedrooms and underground parking. Perfect for professional tenants.

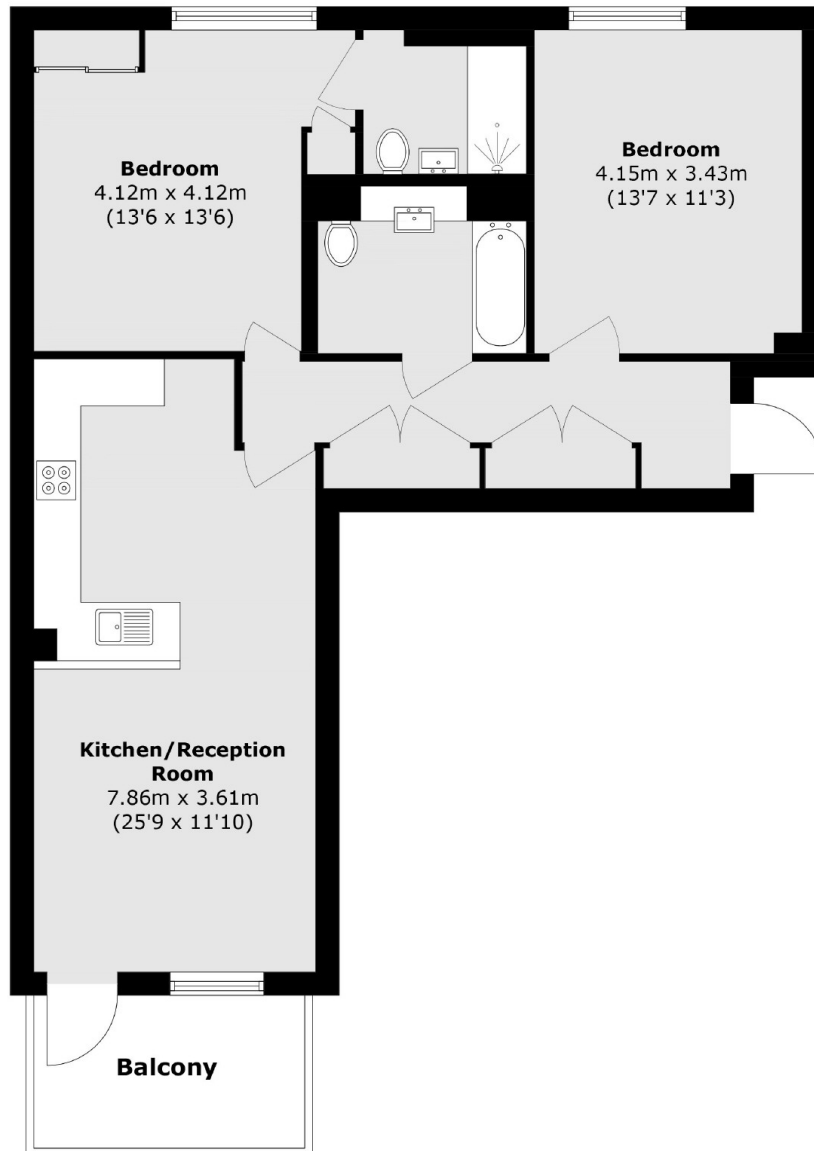
The property is near Arnos Grove and New Southgate which has excellent transportation links into London. Shops including retail parks near by plus local cafes in Arnos Grove and Starbucks in the development with local supermarket.

Features

- Two Double Bedrooms
- New Development
- Open Plan Kitchen
- Wood Floors
- Two Bathrooms
- Second Floor (with Lift)



Montmorency Gardens, London, N11



Total area (approx.): 76.0 sq. m (818.0 sq. ft)

Balcony area (approx.): 6.8 sq. m (73.1 sq. ft)