



Oakleigh Road North, N20

£1,600 Per calendar month

A bright two bedroom first floor flat located in a Purpose-Built Block in Whetstone. The property comprises two bedrooms, bright living room, separate kitchen and bathroom with shower.

The property is located in a cul-de-sac off Beaconsfield Road, close to local shopping/travelling facilities including New Southgate Train Station and Arnos Grove (Piccadilly Line) Train Stations. Brunswick Park is also nearby.

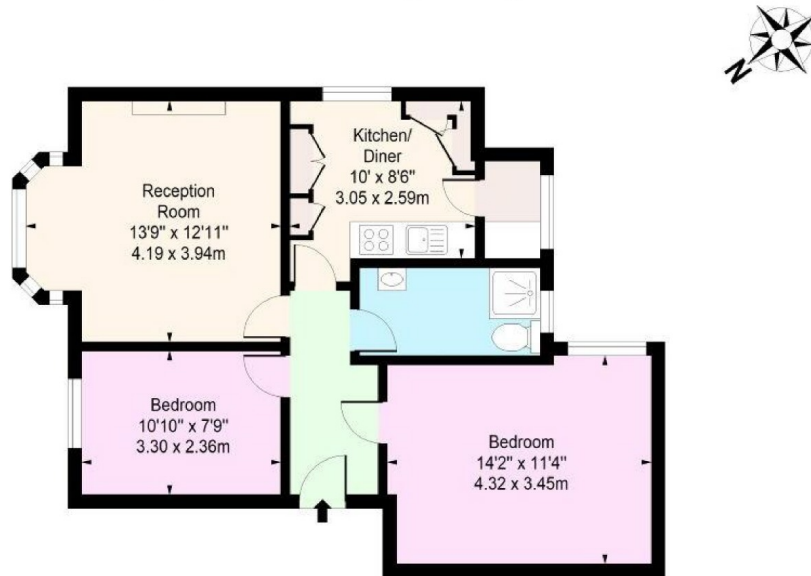
Features

Two Double Bedrooms
First Floor
Separate Kitchen
Spacious Living Room
Whetstone
Furnished

Oakleigh Road North, London, N20

Parkwood, N20

Approx. Gross Internal Area 630 Sq Ft - 58.53 Sq M



Ground Floor

Floor Area 630 Sq Ft - 58.53 Sq M

For Illustration Purposes Only - Not To Scale

Dexters

Muswell Hill
418 Muswell Hill Broadway
London
N10 1DJ
Lettings
020 8444 9914

Energy Rating: . We aim to make our particulars both accurate and reliable. However they are not guaranteed; nor do they form part of an offer or contract. If you require clarification on any points then please contact us, especially if you're traveling some distance to view. Please note that appliances and heating systems have not been tested and therefore no warranties can be given as to their good working order.

 **RICS** | Regulated
Estate Agent
and Letting Agent

[dexters.co.uk](https://www.dexters.co.uk)