



## Long Lane, N2

### £500,000

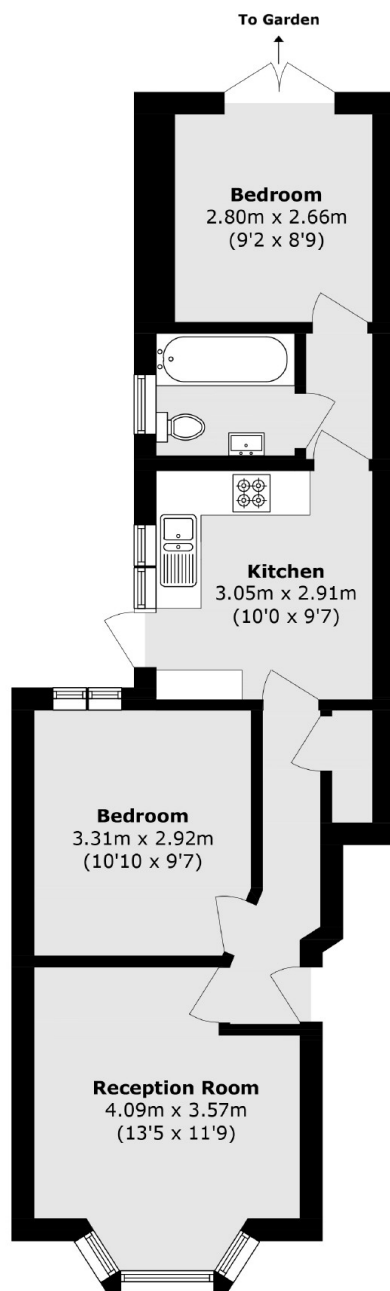
This charming two double bedroom ground floor garden flat, set within an attractive Edwardian-style house, offers a perfect blend of character and modern living. Featuring a well-maintained interior and spacious rooms, high ceilings, and an abundance of natural light throughout.

Long Lane is within easy walking distance of Coldfall Woods, Stephenson House, Cherry Tree and Highgate woods and within reach of Hampstead Heath and Muswell Hill, the area has an attractive mix of green spaces, local amenities and public schools such as (Martin's Primary School and Holy Trinity) as well as Archer Academy secondary school.

### Features

- High Ceilings
- Double Glazing
- Private Garden
- Two Bedrooms
- Good Transport Links
- Wooden Floors

# Long Lane, London, N2



Total area (approx.): 51.3 sq. m (552.2 sq. ft)

## Dexters

Muswell Hill  
418 Muswell Hill Broadway  
London  
N10 1DJ  
Sales  
020 8444 2388

Energy Rating: D. We aim to make our particulars both accurate and reliable. However they are not guaranteed; nor do they form part of an offer or contract. If you require clarification on any points then please contact us, especially if you're traveling some distance to view. Please note that appliances and heating systems have not been tested and therefore no warranties can be given as to their good working order.

 **RICS** | Regulated  
Estate Agent  
and Letting Agent

[dexters.co.uk](https://www.dexters.co.uk)