



Woodville Road, EN5

£850,000

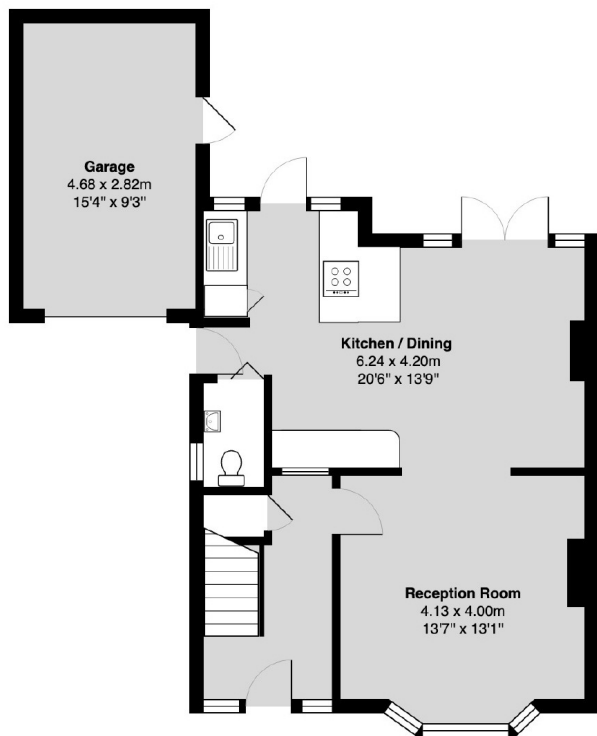
We are pleased to present this attractive three bedroom, semi-detached, 1930s built house, ideal for family living. The property also consists of a bright and spacious reception room, separate from a large kitchen/diner leading out to an impressive 75ft garden.

Located on a highly desired residential street, this house is within close proximity to outstanding nearby schools. It is also within 0.5 miles of High Barnet tube station and walking distance to an array of nearby shops and restaurants and green spaces such as Hadley Woods.

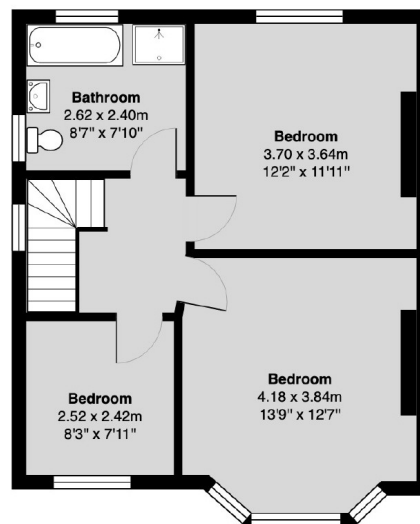
Features

- Semi-Detached
- Three Bedrooms
- Garage
- Off Street Parking
- Potential To Extend STPP
- School Catchment

Woodville Road, Barnet, EN5



Ground Floor



First Floor

Total area (approx): 97.2 m² ... 1047 ft² (excluding garage)

Total area (approx) :13.19 sq m (142 sq ft)