

Pembroke Road, N10

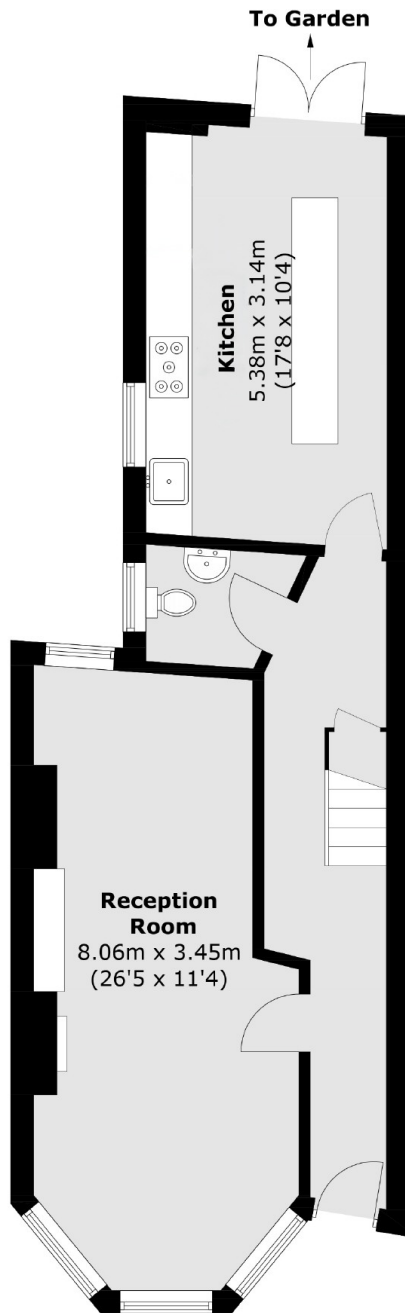
£800,000

Pembroke Road is less than 0.5 miles from Halliwick recreation ground and a short walk to Coldfall Woods and is in the local catchment for popular schools. Tesco Superstore can be found a short distance away. The Broadway, known for restaurants, shops, and bars, is located less than a mile away.

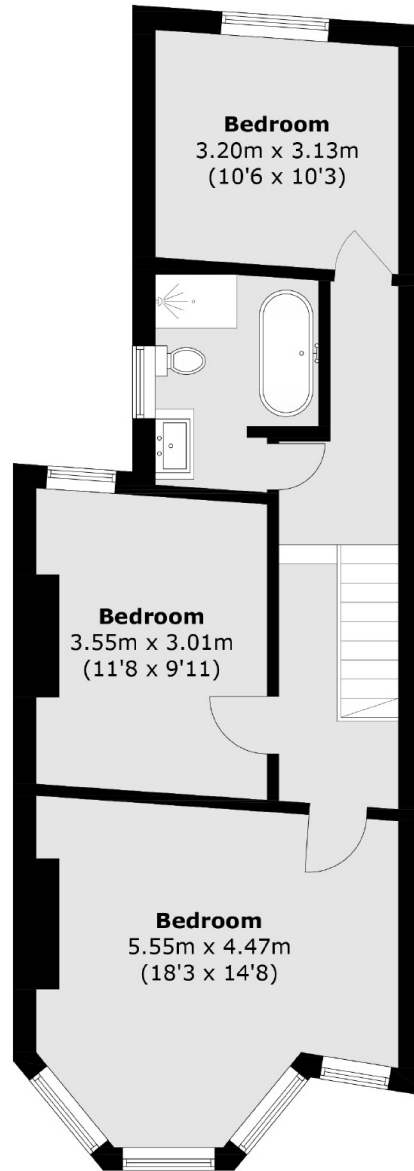
Features

- Freehold
- Three Bedrooms
- Potential To Extend (STPP)
- Double Glazing
- Chain Free
- School Catchment

Pembroke Road, London, N10



Ground Floor



First Floor

Total area (approx.): 113.4 sq. m (1,220.6 sq. ft)