



Alexandra Park Road, N10

£350,000

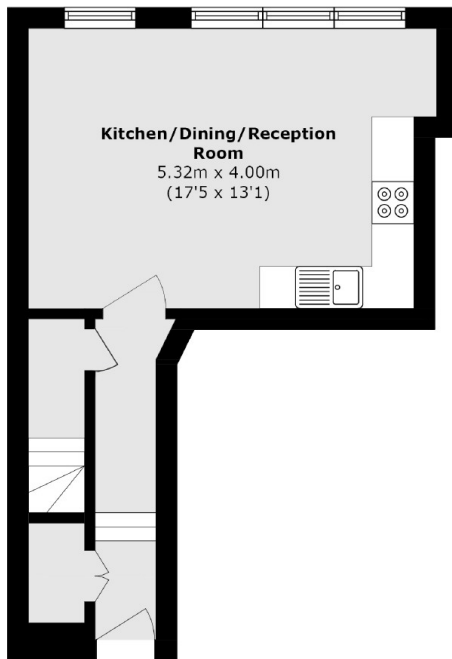
Situated on the first floor of a period building is the chance to secure a duplex-level one-bedroom flat with a great-sized standalone bedroom on the upper floor boasting skyline views across Muswell Hill. The living area is open planned with lots of natural light.

Situated within catchment of Rhodes Avenue primary and Alexandra Park secondary schools, close to Bounds Green tube station (Piccadilly Line), Alexandra Palace with its main line station to Moorgate and Old Street. Muswell Hill Broadway is also a short distance away.

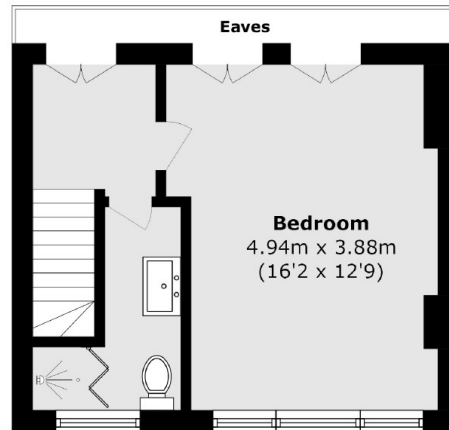
Features

- One-Bedroom
- Duplex Level
- Open Plan Living
- Chain Free
- Double Glazed
- Period Building

Alexandra Park Road, London, N10



First Floor



Second Floor

Total area (approx.): 59.6 sq. m (641.5 sq. ft)
(Excluding Eaves)