



Woodland Rise, N10

£725,000

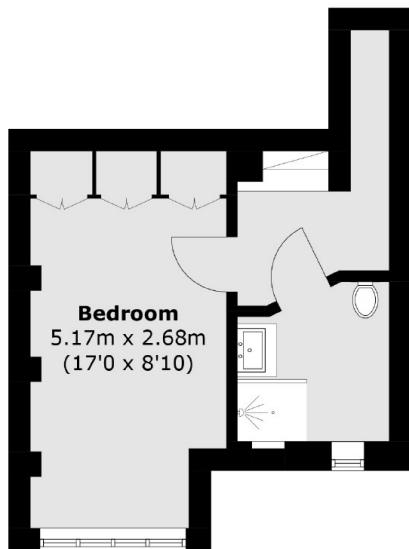
This charming, recently refurbished, two double bedroom flat, set in a double-fronted Edwardian conversion, benefiting from split level living and a modern day open plan layout, ideal for entertaining with direct access onto a South facing private rear garden.

The property is located in Muswell Hill, in close proximity to the excellent amenities of Muswell Hill Broadway. The nearest public transport links are Highgate and East Finchley (London Underground Northern Line) and Alexandra Palace (National Rail) and buses 43 and 134.

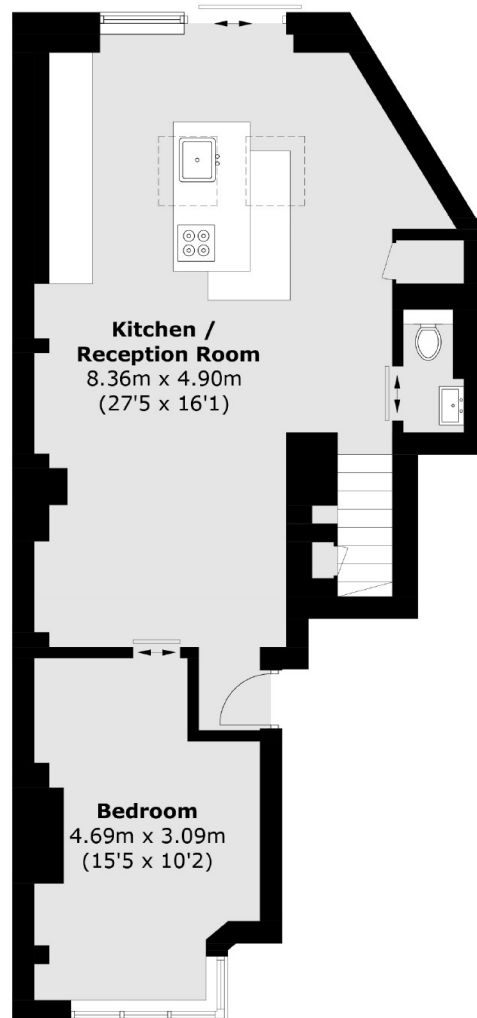
Features

- Two Double Bedrooms
- Own Front Door
- Private Rear Garden
- Modern Condition
- Split Level
- Chain Free

Woodland Rise, London, N10



Lower Ground Floor



Raised Ground Floor

Total area (approx.): 80.5 sq. m (866.4 sq. ft)