



## Colney Hatch Lane, N10

### £650,000

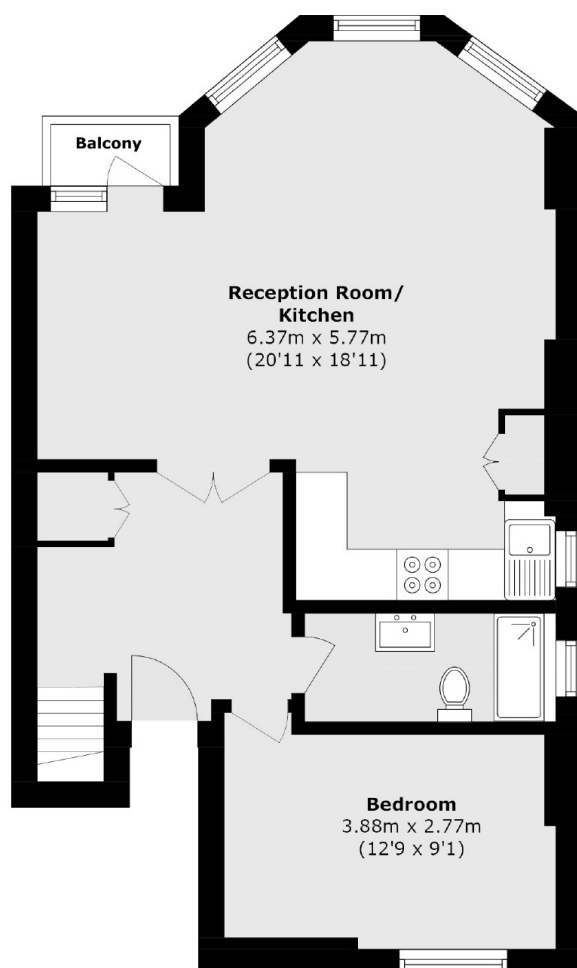
Dexters are proud to present a collection of four newly converted flats. On the ground floor, there are two one bedroom flats. On the first floor, there is a set of two two bedroom duplex flats. All four flats are brand new with modern appliances and come with a share of freehold and their own individual private rear gardens.

Conveniently positioned near various bus routes with direct access to Muswell Hill Broadway and walking distance to local shops, This property is 0.3 miles from Halliwick recreation ground and a short walk away from Coldfall Woods.

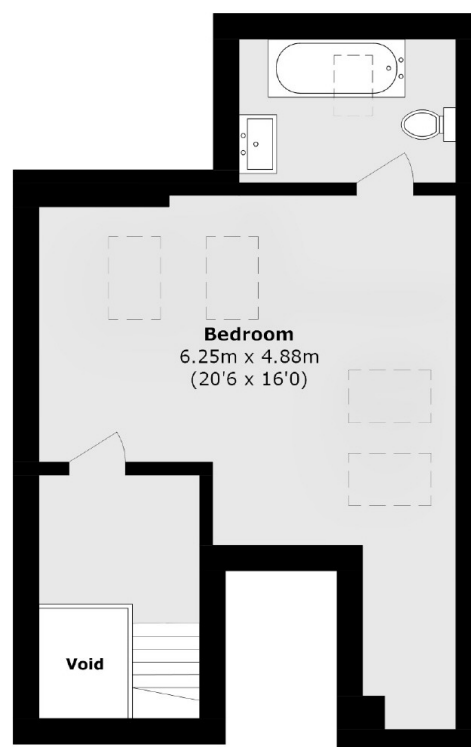
### Features

- Collection of Four Flats
- Brand Newly Converted
- Two Bedroom Flats
- One Bedroom Flats
- All With Private Gardens
- Share of Freehold

# Colney Hatch Lane, London, N10



**First Floor**



**Second Floor**

Total area (approx.): 83.3 sq. m (896.6 sq. ft)

Balcony area (approx.): 1.0 sq. m (10.7 sq. ft)

(Excluding Void)