



## Sparkford Gardens, N11

### £585,000

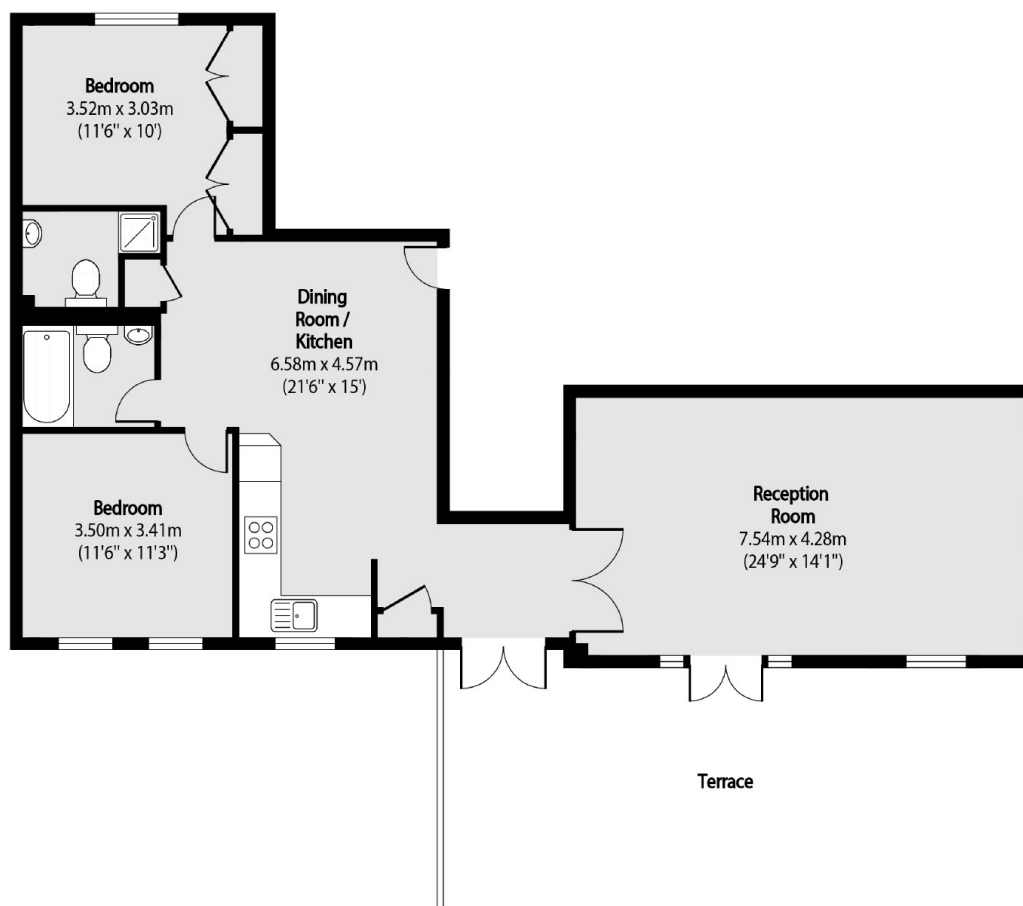
Situated within a peaceful gated development is this spacious, two double bedroom apartment comprised of separate kitchen and large reception room. The property also showcases a large terrace with magnificent views across London as well as two bathrooms, including one en suite.

Yarlington Court is located within close proximity to the local shops and restaurants. This flat is within short walking distance of New Southgate station. New Southgate station is only twenty minutes to the city via train.

### Features

- Two Bedrooms
- Gated Development
- Purpose Built
- Allocated Parking
- Fourth Floor
- Excellent Transport Links

# Sparkford Gardens, London, N11



Total area (approx): 96.52 sq m (1039 sq. ft)

Terrace total area (approx): 39.80 sq m (428 sq. ft)