



## Maidstone Road, N11

### £900,000

This Edwardian three-bedroom end-of-terrace family home with off-street parking boasts three bedrooms, two bathrooms, and a wealth of period features such as fireplaces in most rooms, high ceilings, and a front-facing balcony. The property has great potential to extend to the rear and loft subject to planning permission.

Surrounded by an array of amenities and reputable schools, this property becomes an ideal choice for families and landlords with schools such as Bounds Green Primary School and Woodhouse College with convenient access to public transportation.

### Features

- End of Terrace
- Three Bedrooms
- Off Street Parking
- Period Features Throughout
- Potential to Extend (STPP)
- Bounds Green Tube Station





## Maidstone Road, N11

Upon entering the property, you're greeted by a spacious entrance hall. Beyond, You'll find two separate receptions one serving as an entertainment area and the other as a lounge the latter has the added benefit of a patio door leading to a mature garden.

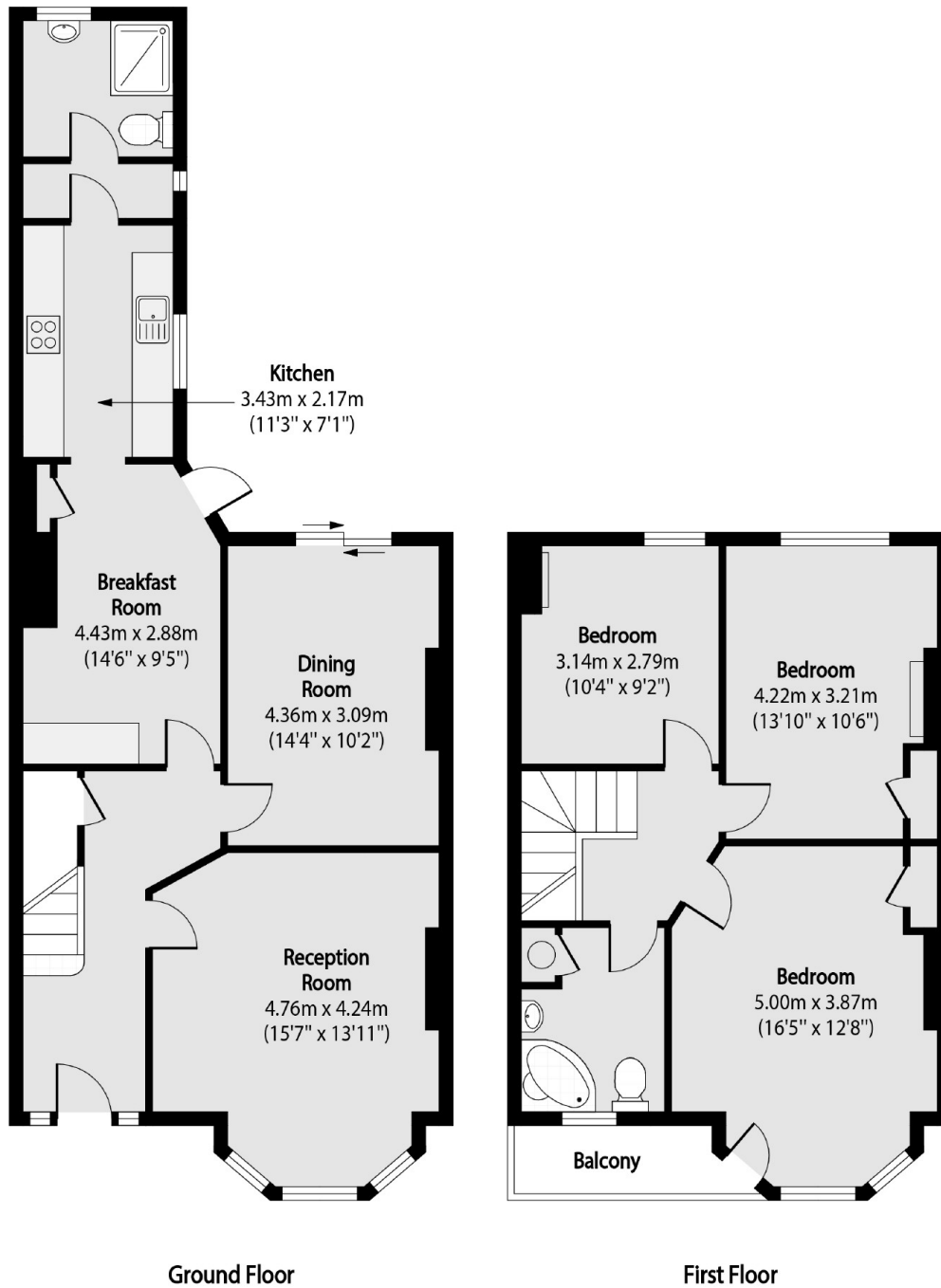
Continuing through the hallway, you'll come to the breakfast room, which connects to the galley-style kitchen and, further along, to the ground floor bathroom.

Upstairs, on the first floor, there are two double bedrooms and one single bedroom currently utilised as a home office, along with a four-piece family bathroom.





# Maidstone Road, London, N11



Total area (approx): 123.44 sq m (1329 sq. ft)

Balcony area (approx): 3.11 sq m (33 sq. ft)

## Dexters

Muswell Hill  
418 Muswell Hill Broadway  
London  
N10 1DJ  
Sales  
020 8444 2388

Energy Rating: E. We aim to make our particulars both accurate and reliable. However they are not guaranteed; nor do they form part of an offer or contract. If you require clarification on any points then please contact us, especially if you're traveling some distance to view. Please note that appliances and heating systems have not been tested and therefore no warranties can be given as to their good working order.

 **RICS** | Regulated  
Estate Agent  
and Letting Agent

[dexters.co.uk](https://www.dexters.co.uk)