



## Park Avenue, N22

### £375,000

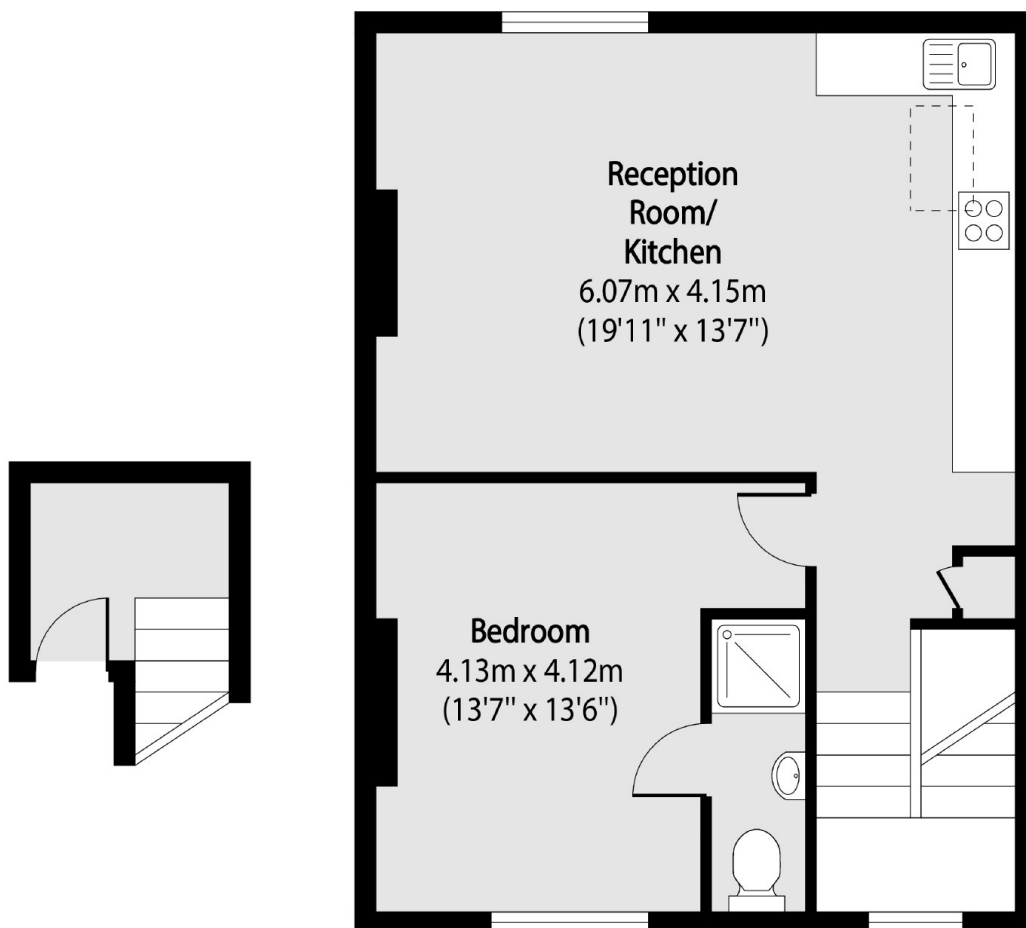
A one bedroom conversion situated on the top floor of this Victorian house. This property is modernly finished and offers open plan kitchen/living and an en-suite bathroom.

Located within walking distance of both Bounds Green underground and Alexandra Palace stations, this flat is situated on a residential street and is close to a selection of local independent shops, cafes, amenities and services.

### Features

- One Bedroom
- Top Floor
- En Suite
- Open Plan
- Period Conversion
- Modern Finish

# Park Avenue, London, N22



Second Floor  
Entrance

Third Floor

Total area (approx): 55.10 sq m (593 sq. ft)

## Dexters

Muswell Hill  
418 Muswell Hill Broadway  
London  
N10 1DJ  
Sales  
020 8444 2388

Energy Rating: E. We aim to make our particulars both accurate and reliable. However they are not guaranteed; nor do they form part of an offer or contract. If you require clarification on any points then please contact us, especially if you're traveling some distance to view. Please note that appliances and heating systems have not been tested and therefore no warranties can be given as to their good working order.

 **RICS** | Regulated  
Estate Agent  
and Letting Agent

[dexters.co.uk](https://www.dexters.co.uk)