



## Brendon Grove, N2

### £530,000

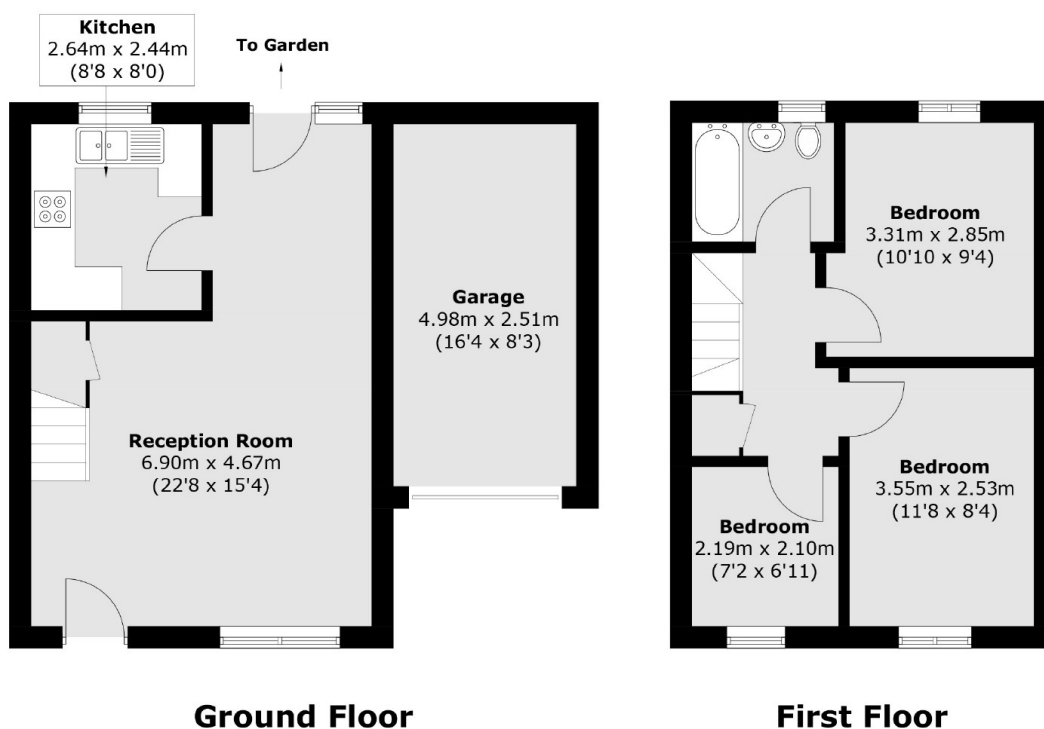
This three-bedroom end of a terraced house comes situated in a quite cul-de-sac, benefiting from a west-facing rear garden, off-street parking, and a single garage. The property is ideal for a homeowner who wants to put their own personality, designs, and ideas into a property.

Brendan Grove is located within half a mile of East Finchley tube station (Northern Line) and local shops and within easy reach of the A406.

### Features

- Three Bedrooms
- End Of Terrace
- Garage
- West Facing Garden
- In Need Of Refurbishment
- Chain Free

# Brendon Grove, London, N2



Approx Internal Area: 64.9 sq. m (698.5 sq. ft)  
Garage: 12.5 sq. m (134.5 sq. ft)  
Total: 77.4 sq. m (833.0 sq. ft)