

## Colney Hatch Lane, N10

£325,000

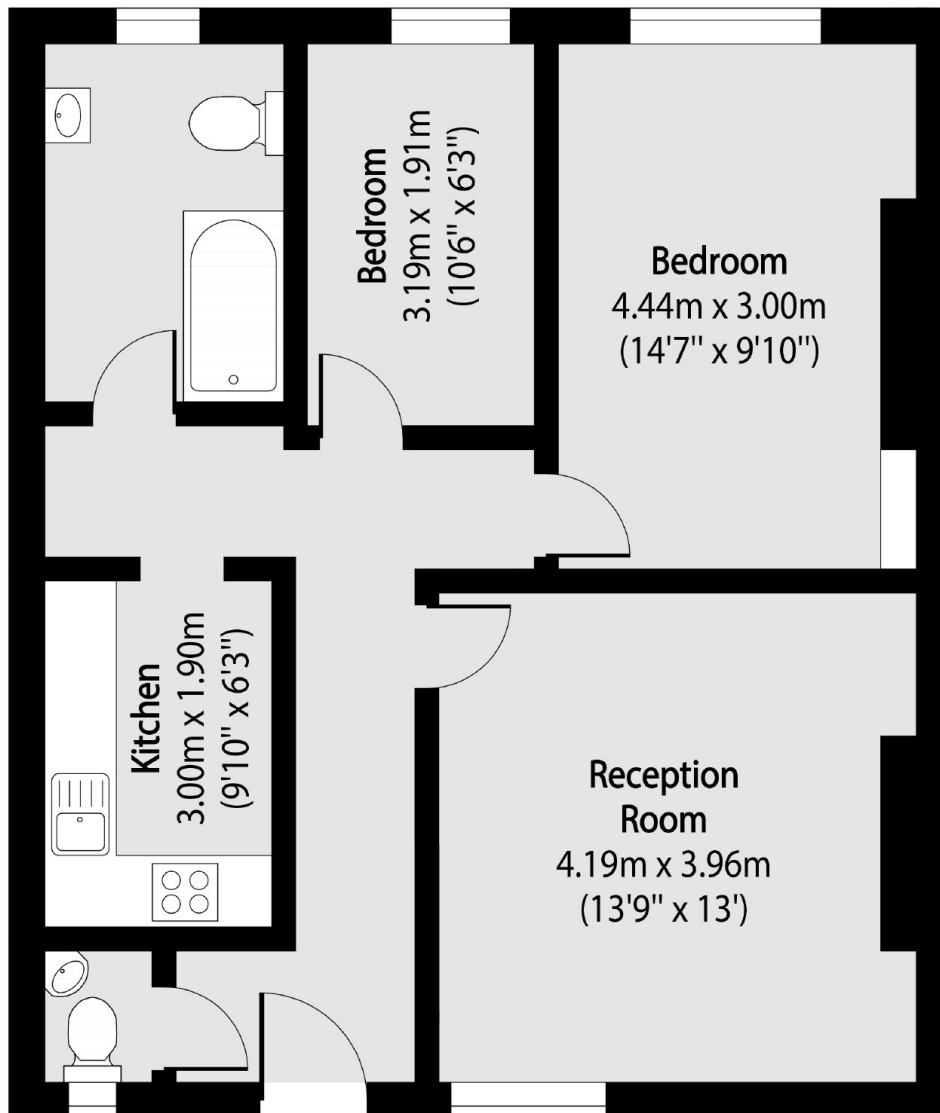
This generously sized two double-bedroom purpose built flat situated on the first floor with separate kitchen and living room areas generating great natural light via large period windows with noticeably high ceilings, a guest WC and a maintained communal garden area.

Conveniently positioned for various bus routes and walking distance to the local shops, this property is less than 0.5 miles from Halliwick recreation ground and a short walk to Coldfall Woods and is in the local catchment for popular schools.

### Features

- Two Bedrooms
- Own Front Door
- Over 150 Year Lease
- Period Features
- Garden Area
- Chain Free

# Colney Hatch Lane, London, N10



Total area (approx): 63.51 sq m (684 sq. ft)