



Tetherdown, N10

£1,075,000

This three double bedroom period conversion with off street parking and a private entrance situated at garden level benefits from expansive and ultra modern, open plan living area with underfloor heating and views out onto a private rear garden via bi-folding glass doors.

Tetherdown is a prestigious road of Muswell Hill where you will find all local amenities including a variety of independent shops, restaurants, cafes and a cinema. Local transport links include Highgate and East Finchley underground stations (Northern Line). Along with some of the best schools in North London.

Features

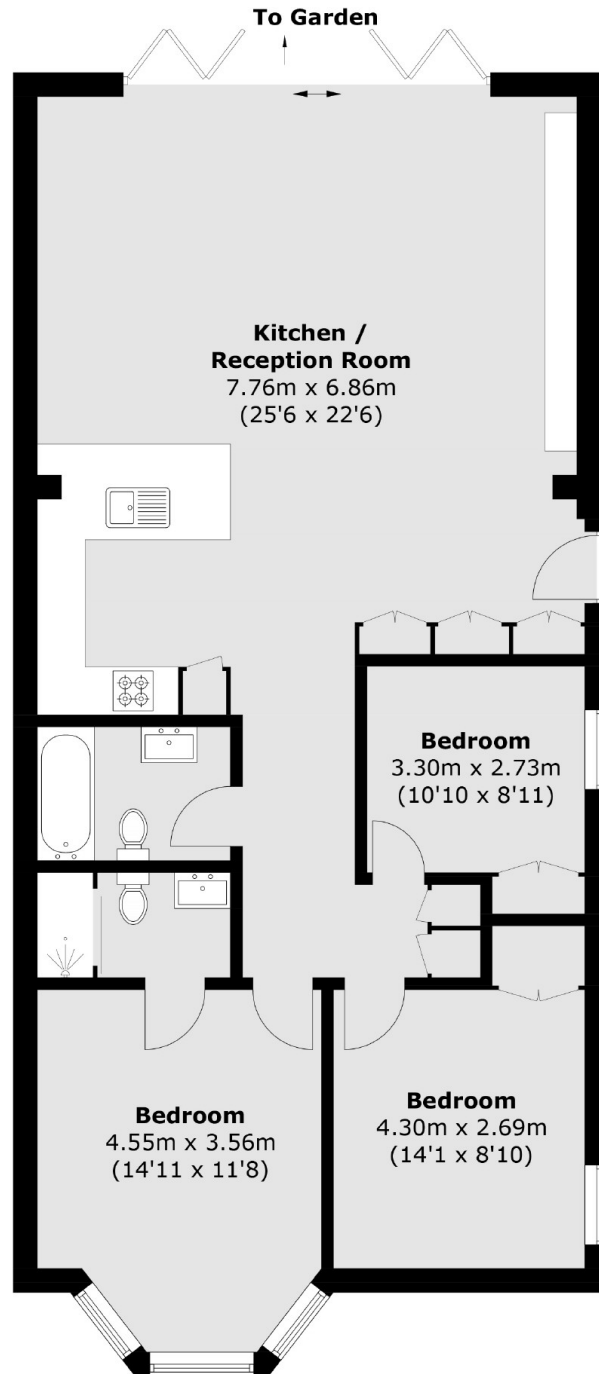
- Three Bedrooms
- Garden Level
- Off Street Parking
- Chain Free
- Long Lease
- Private Garden



Tetherdown, N10



Tetherdown, London, N10



Total area (approx.): 104.0 sq. m (1,119.4 sq. ft)