



Colney Hatch Lane, N10

£415,000

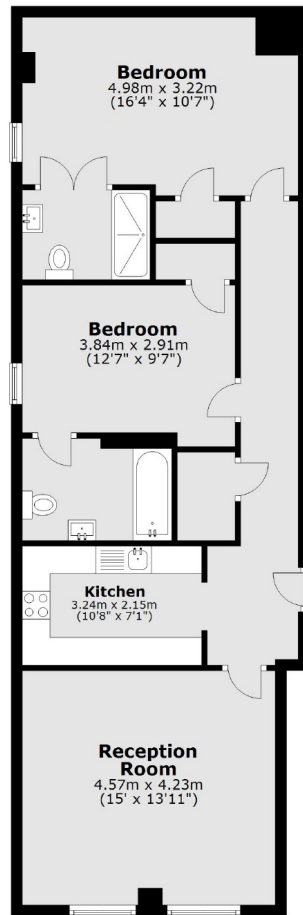
This open plan two bedroom flat with two bathrooms is situated on the ground floor of a modern built block. The flat comes fully double glazed with combination boiler, spotlights and laminated wood effect style flooring and is offered on a chain free basis.

Conveniently positioned for various bus routes and walking distance to the local shops, this property is less than 0.5 Miles from Halliwick recreation ground and a short walk to Coldfall Woods and is in the local catchment for popular schools.

Features

Two Bedrooms
Ground Floor
Two Bathrooms
Chain Free
Leasehold
Spotlights

Colney Hatch Lane, London, N10



Total area: approx. 77.9 sq. metres (838.3 sq. feet)