



Palmerston Crescent, N13

£385,000

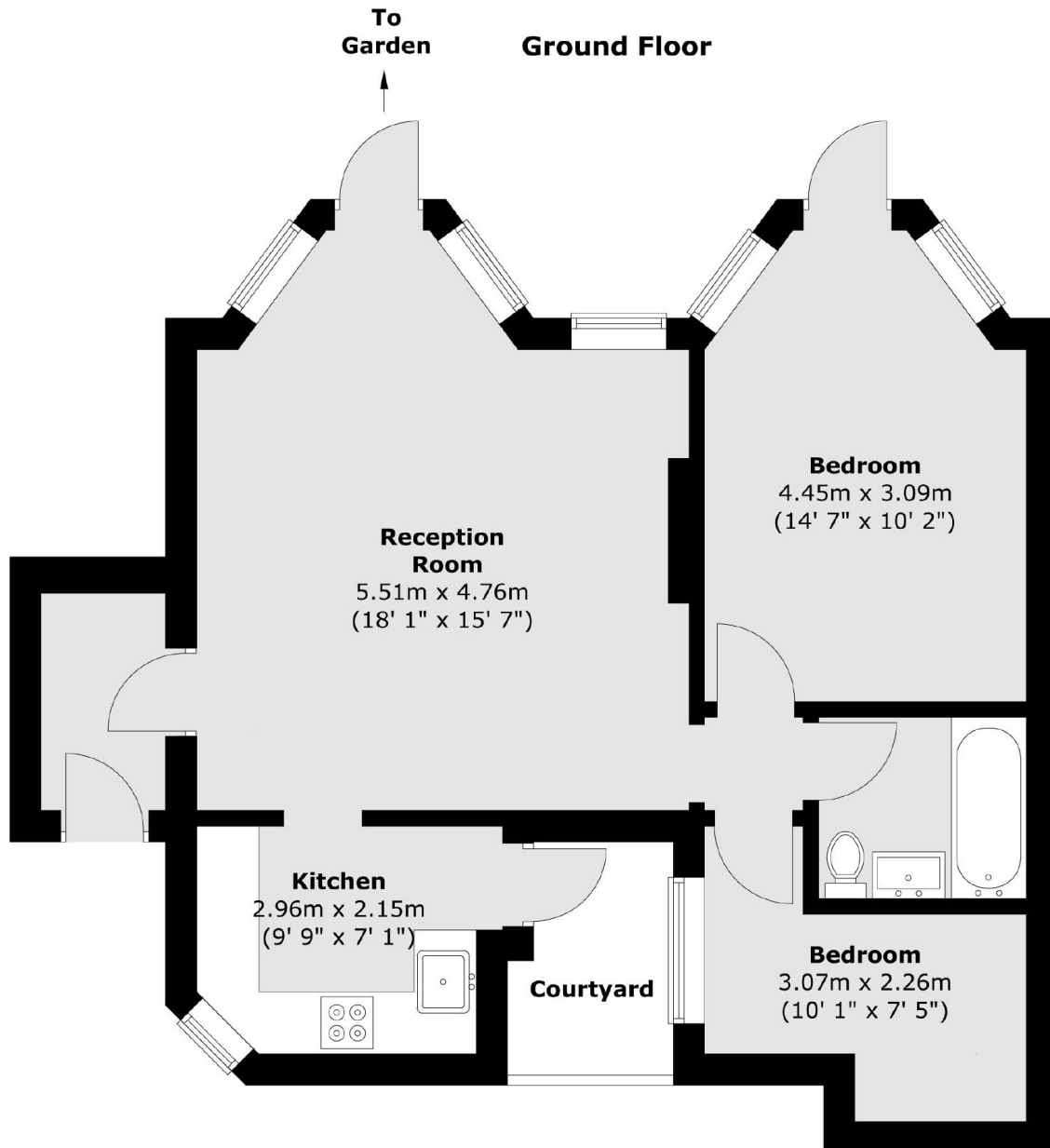
This fully double-glazed ground floor two bedroom maisonette with its own front door and private off-street parking comes with parquet flooring, a modern-day kitchen and a large separate living area with direct access onto a south facing rear garden

Located moments from Palmers Green High Street and Network Rail station with links to Central London in circa twenty minutes. The property is also within very close proximity to an array of shops, restaurants and local amenities.

Features

- Two Bedrooms
- Ground Floor
- Share of Freehold
- Off-Street Parking
- Private Entrance
- Rear Garden

Palmerston Crescent, London, N13



Total area (approx.) : 58.6 sq. m (631 sq. ft)
Total courtyard area (approx.) : 3.3 sq. m (35 sq. ft)