

## Colney Hatch Lane, N10

£300,000

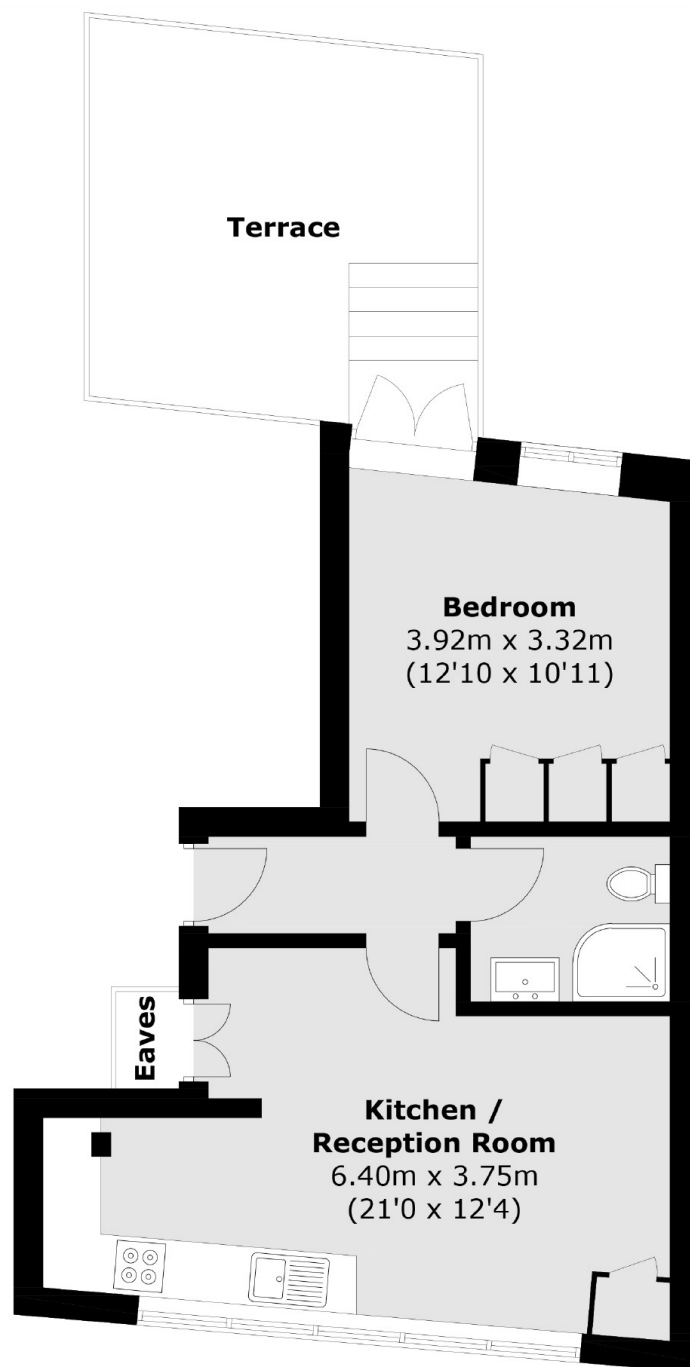
A first floor modern one bedroom apartment with a private roof terrace and communal garden. The property is offered for sale in excellent condition having been converted only five years ago..

Located on the north side of Muswell Hill Broadway, close to local shops and the 43 and 134 bus routes which give access to Highgate underground station (Northern Line).

### Features

- One Bedroom
- Open Plan Kitchen
- Roof Terrace
- Communal Garden
- Shower Room
- Double Glazing

# Colney Hatch Lane, London, N10



Total area (approx.): 39.4 sq. m (424.1 sq. ft)  
(Excluding Eaves)

Terrace: 15.6 sq. m (168.0 sq. ft)