

Denmark Terrace, N2

£500,000

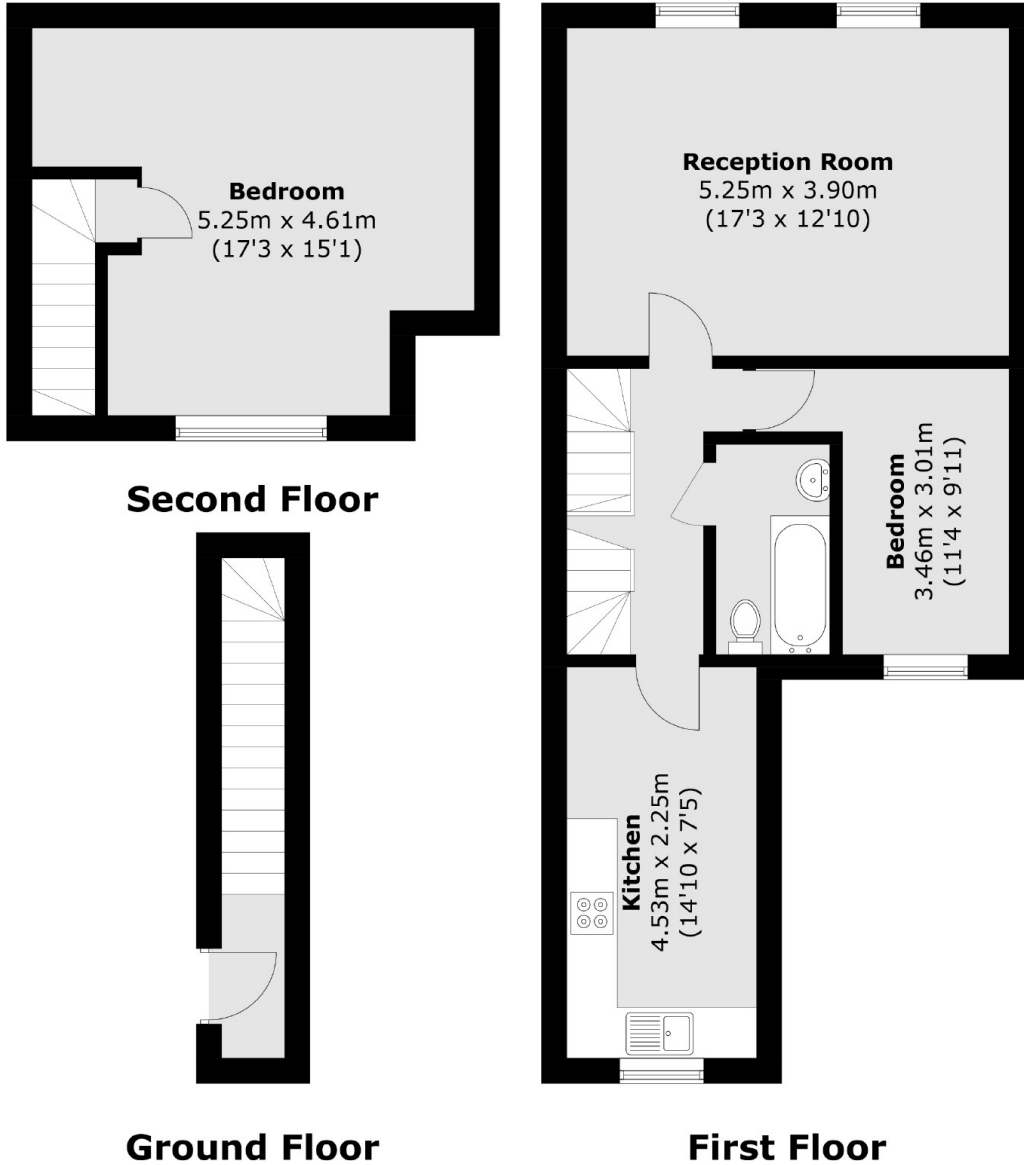
Spread over two floors of bright and airy living space is this two bedroom, split level maisonette with a separate eat in kitchen, available on a chain free basis. This spacious apartment consists of a well sized reception room, a courtyard patio area and a large, private rear garden.

This property is situated 0.6 miles to East Finchley underground station (Northern Line) and only 0.5 miles to the many shops and amenities at Muswell Hill Broadway. Fortismere secondary school and Tetherdown primary school are within catchment area.

Features

- Two Bedroom
- Private Garden
- Own Front Door
- Split Level
- School Catchment
- Chain Free

Denmark Terrace,
London, N2



Total area (approx.): 77.4 sq. m (833.1 sq. ft)