

Alexandra Park Road, N22

£2,400 Per calendar month

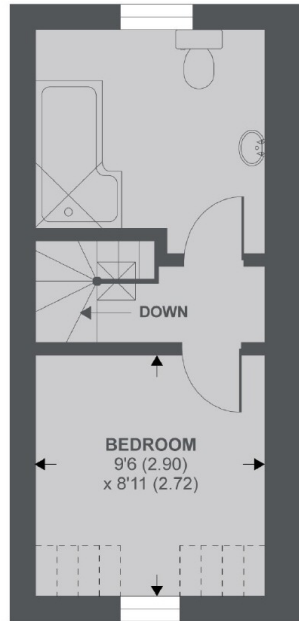
A stunning three bedroom apartment set within this beautiful conversion building on Alexandra Park Road. Bright reception room with wooden floors, separate modern kitchen, split level apartment.

Fantastic location with Alexandra Park moments away from the property. Perfect for transport links into centre London with Alexandra Palace train station and Bounds Green tube station close by.

Features

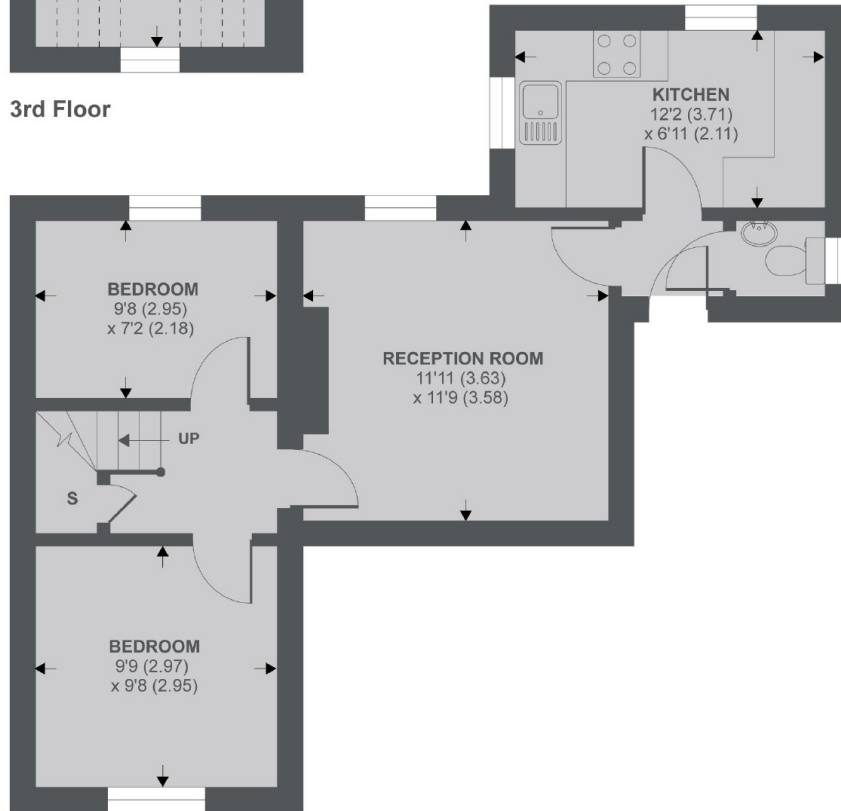
Three Bedrooms
Modern Property
Split Level Apartment
Conversion Building
First and Second Floor
Modern Kitchen & Bathroom
Alexandra

Alexandra Park Road, London, N22



3rd Floor

Denotes restricted
head height



2nd Floor

APPROX FLOOR AREA 683 SQ.FT 63.4 SQ.M (INCLUDES RESTRICTED HEAD HEIGHT)

Copyright nichecom.co.uk 2019 REF : 556574