



Queens Avenue, N10

£749,950

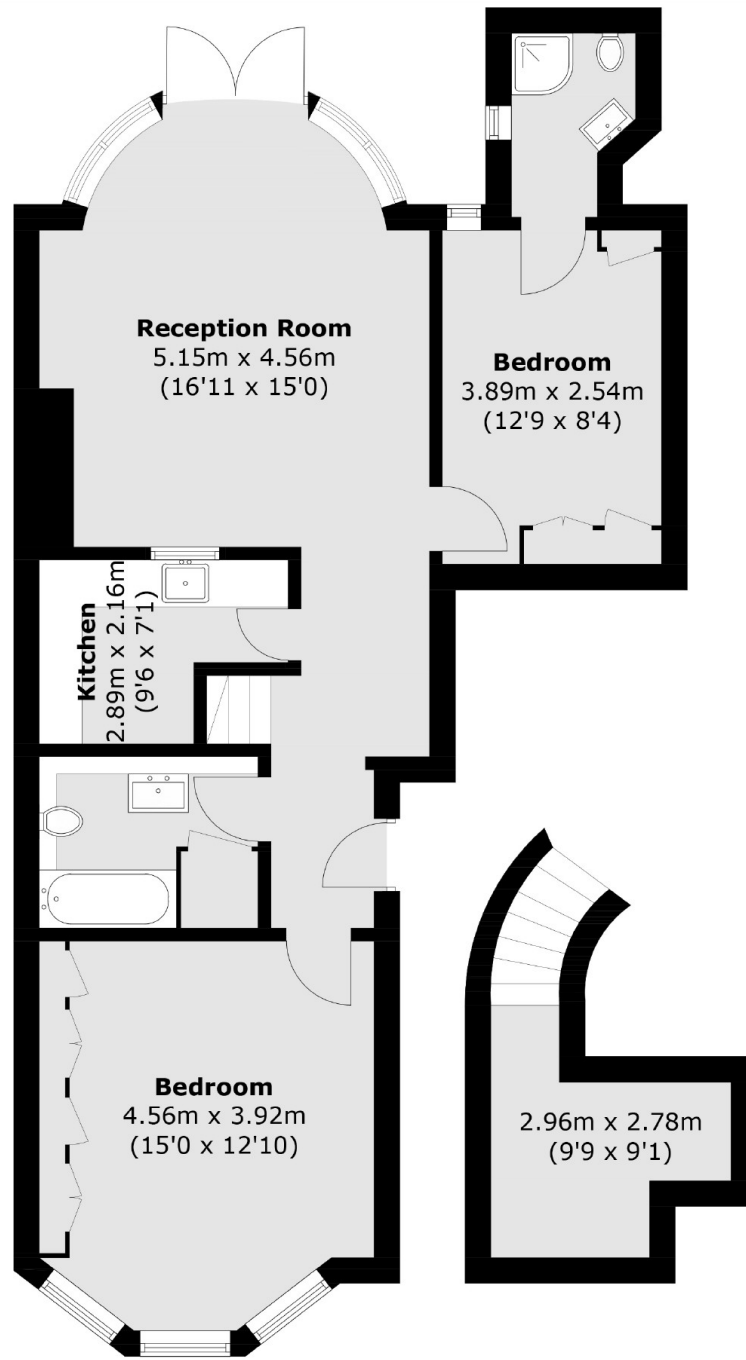
Situated to the rear of an Edwardian residence featuring two double bedrooms, two bathrooms and incredible ceiling height that accommodates a separate gallery level, currently being used as a home office and dining space. Original glass doors allow an abundance of internal light and views out onto a private, mature garden.

The flat is situated close to the heart of Muswell Hill Broadway, with its extensive shopping, restaurants facilities and bus routes towards East Finchley tube station - for speedy journeys to the City - and a short walk from the greenery of Alexandra Park.

Features

- Two Double Bedrooms
- Share Of Freehold
- Two Bathrooms
- Ground Floor
- Private Garden
- School Catchments

Queens Avenue, London, N10



Ground Floor

First Floor

Total area (approx.): 77.4 sq. m (833.1 sq. ft)