



Stanley Road, N11

£725,000

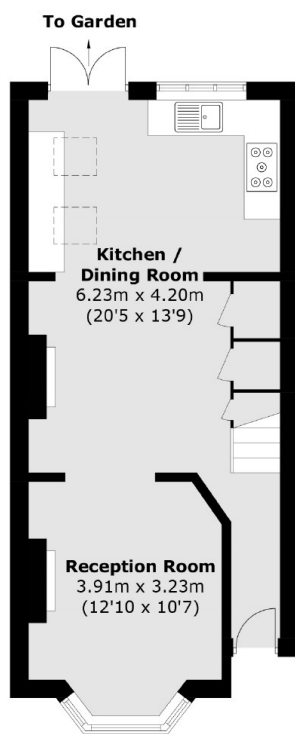
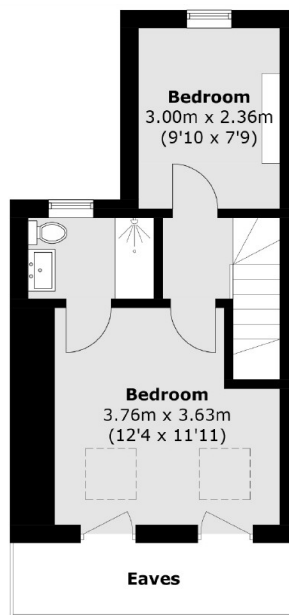
This charming Victorian terrace styled house presented in modern condition and extended on the ground floor and the loft offers a well designed open plan kitchen/diner with direct access into a generously sized west facing garden, along with three double bedrooms and a study with two well finished bathrooms on the first and second floor.

Located on a popular no through Road in Bounds Green, It has close transport links such as Bounds Green underground (0.5 miles) and Bowes Park Overground station (0.7 miles) with shops that are also within reach.

Features

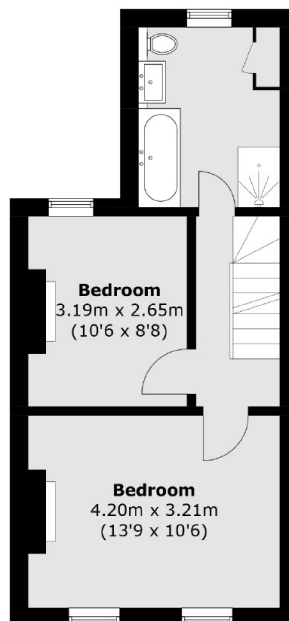
- Four Bedrooms
- Two Bathrooms
- Front and Rear Gardens
- School Catchment
- Double Glazing
- West Facing Garden

Stanley Road, London, N11



Ground Floor

Second Floor



First Floor

Total area (approx.): 103.8 sq. m (1,117.3 sq. ft)
(Excluding Eaves)