



## Royal Drive, N11

£2,350 Per calendar month

A modern two double bedroom apartment on the ground floor with a direct access to a private garden set within an impressive period listed development. The property has a en-suite bathroom, wooden floors throughout, open plan kitchen and access to private parking.

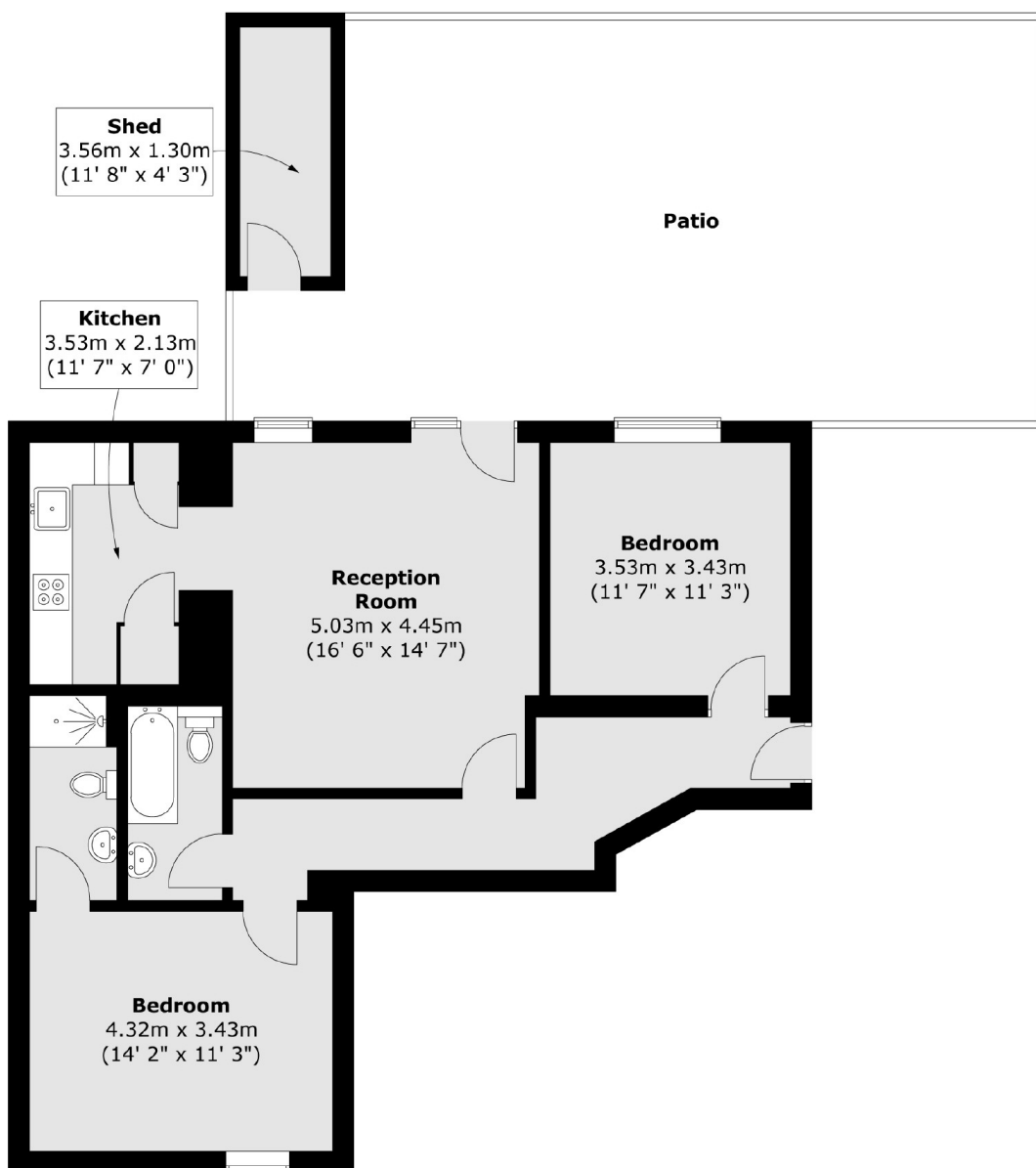
Located within easy reach of local shops and restaurants and with excellent transport links to New Southgate Station (National Rail) and Arnos Grove Tube (Piccadilly Line).

### Features

- Two Double Bedrooms
- Two Bathrooms
- En-Suite Bathroom
- Private Terrace
- Private Garden
- Open-Plan Kitchen
- Wooden Floors Throughout
- New Southgate

# Royal Drive, London, N11

## Lower Ground Floor



Total area (approx.) : 81.2 sq. m (874 sq. ft)  
Total shed area (approx.) : 4.6 sq. m (49 sq. ft)  
Total patio area (approx.) : 59.5 sq. m (640 sq. ft)