



**Pages Lane, N10**

**£1,995,000**

**Dexters**





## Pages Lane, N10

Situated well back from the road, with off-street parking for multiple cars and a private enclosed front garden, is St Martins Convent, built in the 1840s and converted in 2001 into two houses. This property comprises of six double bedrooms, two bathrooms, a guest WC and a large reception room, leading directly out to a mature, south facing garden which offers a outbuilding/studio with a living roof.

On entrance to the property you are greeted with a large driveway as well as an enclosed front garden area. The house offers exceptionally high ceilings throughout and the ground floor consists of a spacious hallway, separate kitchen, a large reception room with direct access to a south facing garden as well as a guest WC. There is also an outbuilding in the garden with underfloor heating and ample space. The first floor offers three double bedrooms and an abundance of natural light. The main bedroom on the first floor also has an en suite and all windows are double glazed throughout. On the second floor, there are a further three double bedrooms, one with built-in storage and a shared bathroom.

The property is located beside one of Muswell Hill's highly desired primary schools and only a short walk to the shops of Colney Hatch Lane and the trendy High Street of Muswell Hill Broadway.

### Features

- Six Bedrooms
- Off-Street Parking
- Two Bathrooms
- School Catchment
- Outbuilding
- High Ceilings







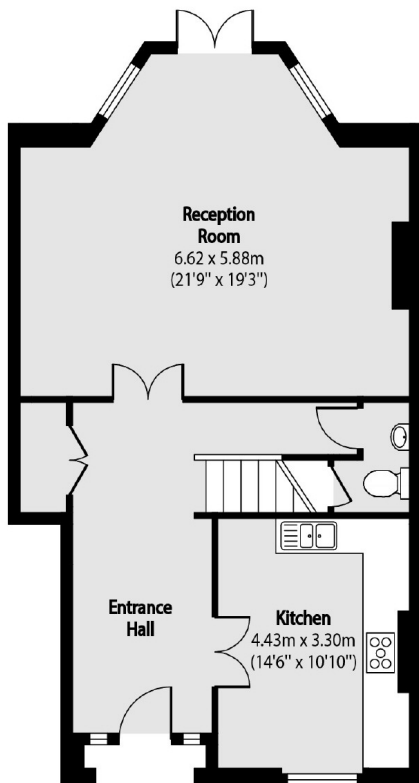




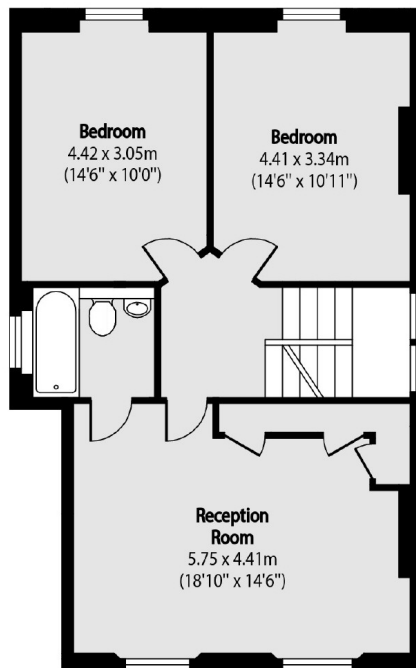




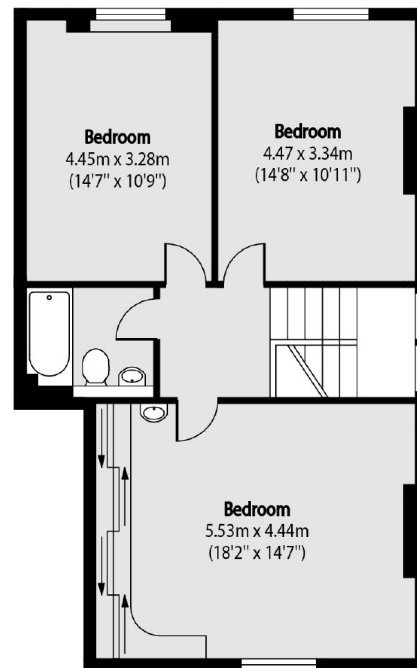
# Pages Lane, London, N10



Ground Floor



First Floor



Second Floor

Total area (approx): 208.25 sq m (2242 sq. ft)