



Osier Crescent, N10

£875,000

This four bedroom family home is flooded in natural light and split over three floors of living space with an open plan kitchen and dining area offering views out via bi-folding doors onto a south facing rear garden.

Osier Crescent is ideally situated close to Muswell Hill Broadway with its vast array of shops, bars, cafes & restaurants, positioned within the catchment area of some of Muswell Hill's best schools and within close proximity to Muswell Hill playing fields and Coldfall Woods parks and open spaces.

Features

- Offers in Excess Of
- Four Bedrooms
- Off-Street Parking
- School Catchment
- Reception and Dining Rooms
- South Facing Garden



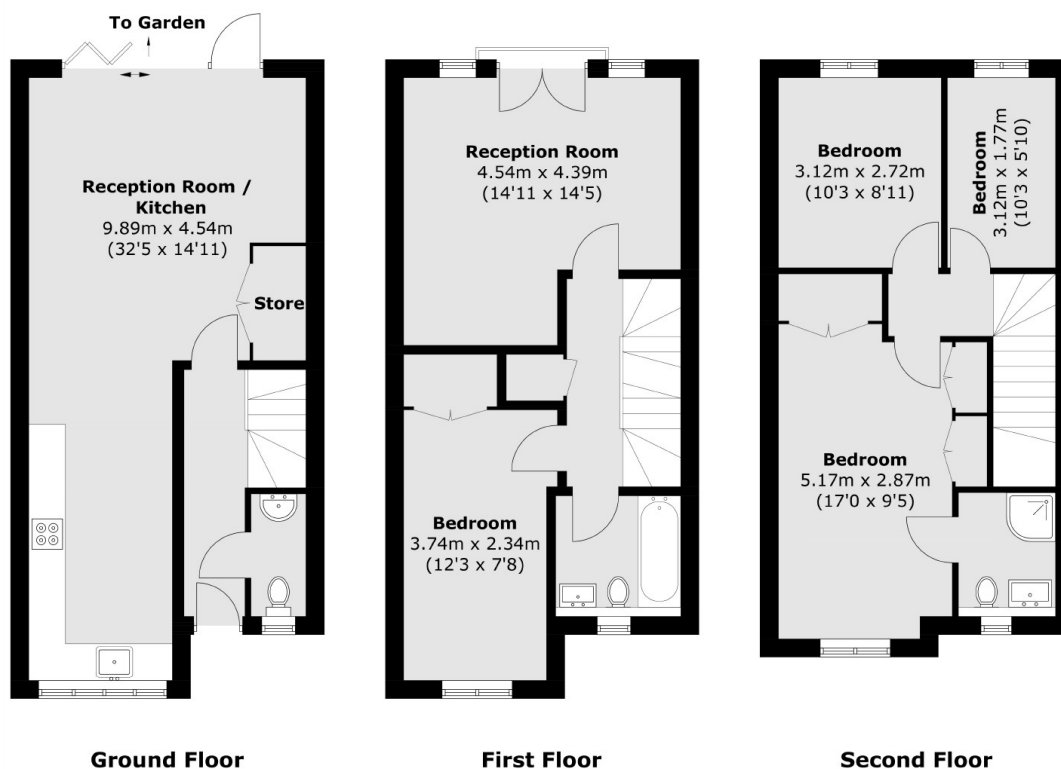
Osier Crescent, N10

The property also has two bathrooms, a guest WC and off-street parking. There is planning permission to go into the loft space to add additional sq ft to the property.

Rear access to the garden can be gained for builders, bikes and gardeners.



Osier Crescent, London, N10



Total area (approx.): 127.0 sq. m (1,367 sq. ft)