



Victoria Road, N22

£1,500,000

This stunning four bedroom, semi detached bungalow completely redesigned to a high specification provides fantastic lateral space and an abundance of natural light spreading across two floors of living. With high grade engineered oakwood flooring, under floor heating and off street parking making this property the ideal home for modern day living.

This popular residential road is situated close to Alexandra Park and provides great access to the shops, restaurants & cafes on Muswell Hill Broadway as well as several sought after schools nearby such as Rhodes and Alexandra Park School.

Features

- Off Street Parking
- Underfloor Heating
- South-Facing Garden
- Great School Catchment
- Four Bedrooms
- Two Floors of Living Space



Victoria Road, N22

Upon entering the bungalow you are greeted by a spacious hallway with views out onto the rear garden. Off the hallway to the left there is access to a large and bright bedroom. On the right side of the hallway you have access to another bedroom and a ground floor shower room.

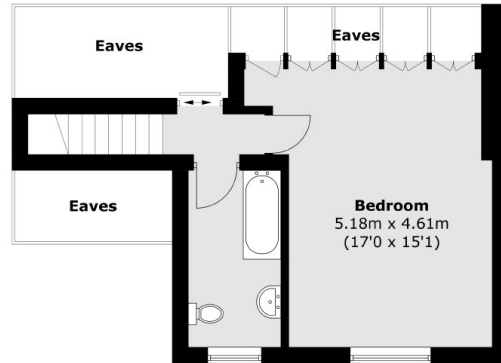
To the rear of the house you have a well designed open plan area with living accommodation to the left and a eat in bespoke kitchen and dining area to the right, strategically separated by a exposed brick designed feature wall. Under floor heating and engineered wood flooring complement's the bungalows modern design.

Making your way up the stairs, you have a impressive sized private bright and airy master bedroom providing a well sized en-suite with additional options to create an office/study in the eaves.

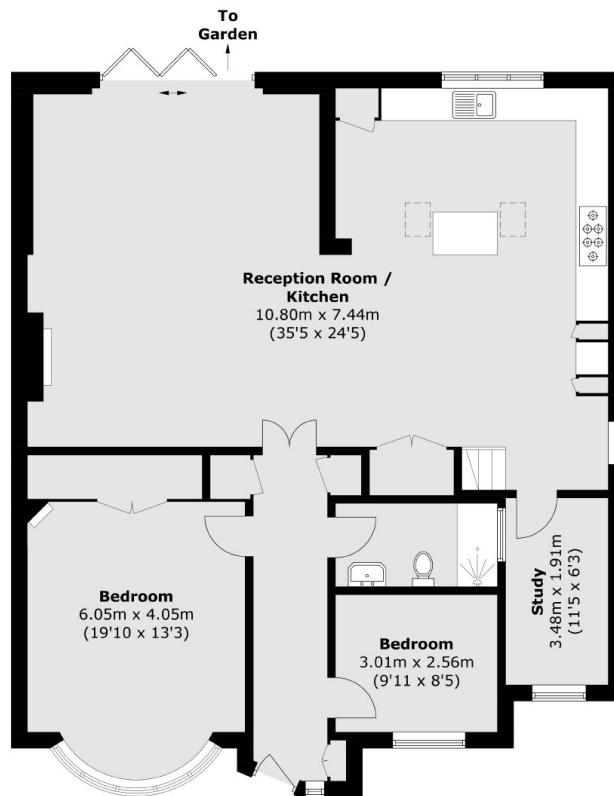
From the lounge you have views of the south facing landscaped garden secluded by mature greenery.



Victoria Road,
London, N22



First Floor



Ground Floor

Total area (approx.): 162.7 sq. m (1751.3 sq. ft)
(Excluding Eaves)