



Ribblesdale Avenue, N11

£360,000

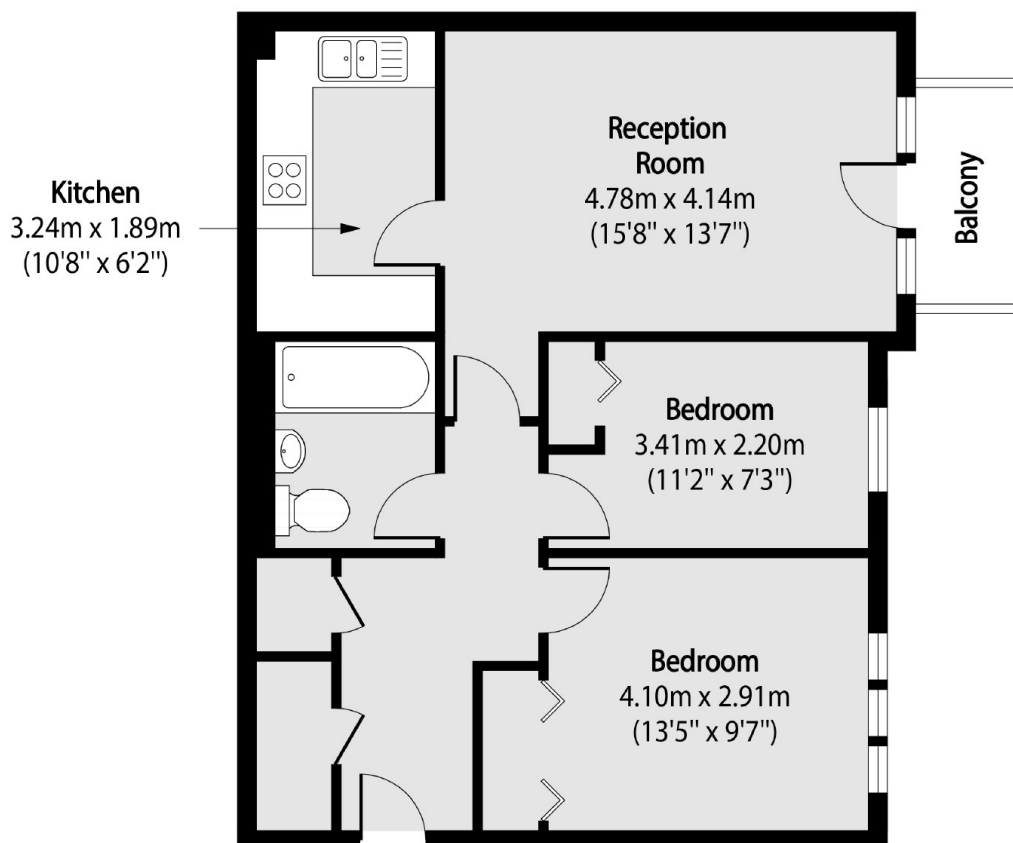
Situated on the second floor of a purpose built block, this apartment benefits from two generous sized bedrooms. Sold on a chain free basis, this flat also offers a southerly facing balcony and separate kitchen and living areas flooded with natural light.

Not far from both New Southgate Rail Station and Arnos Grove Underground Station, Ribblesdale Avenue is also conveniently located for bus routes and the Tesco Superstore.

Features

- Two Bedrooms
- Purpose Built
- Allocated Parking
- Second Floor
- Leasehold
- Chain Free

Ribblesdale Avenue, London, N11



Total area (approx): 56.15 sq m (604 sq. ft)

Balcony total area (approx): 2.53 sq m (27 sq. ft)