



## Morton Way, N14

£1,050,000

Split across three floors of living space is this four bedroom double story extended, detached Peter Dean style family home recently refurbished to an excellent condition with wow factor features. This house offers two bathrooms, two guest WC', landscaped rear garden and off-street parking.

The property is located moments from the green spaces of Arnos Park and local schools including Walker Primary and Ashmole. Arnos Grove underground station is also close by providing excellent transport links into town.

### Features

Detached  
Peter Dean Style  
Four Bedrooms  
Two Bathrooms  
Modern Finish  
Chain Free



## Morton Way, N14

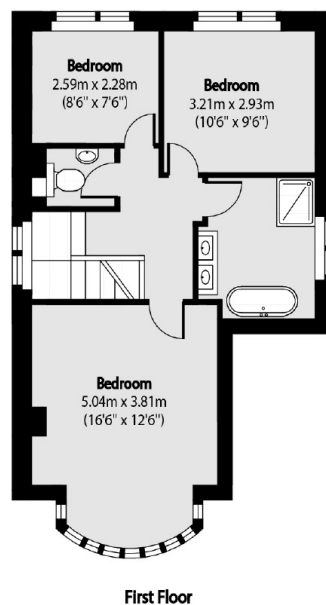
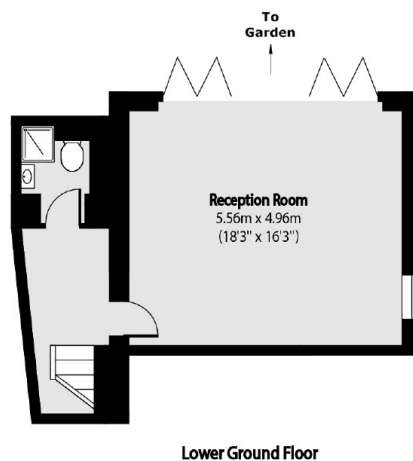
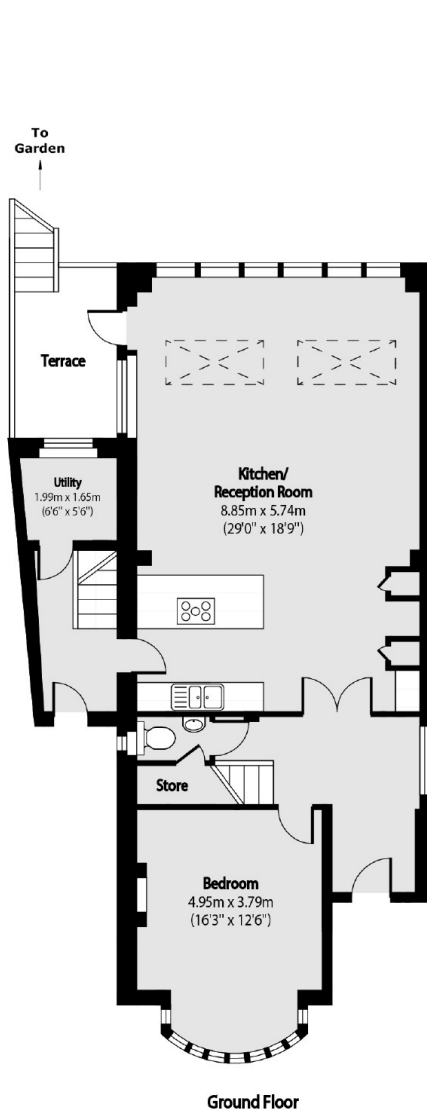
On entrance to the property on the ground floor, you are greeted by a spacious hallway leading on to a ground floor double bedroom as well as access in to a stunning open plan kitchen living area with floor to ceiling windows across the width of the house leading out to a private rear garden.

On garden level, there is a large reception room with bi-fold doors leading directly out to the garden. The lower ground floor is also complimented by another guest bathroom.

The first floor of the property has three bedrooms as well as a shared bathroom and another WC.



# Morton Way, London, N14



Total area (approx): 183.2 sq m (1972 sq. ft)

Terrace total area (approx): 8.92 sq m (96 sq. ft)