



## Richmond Road, N2

£900,000

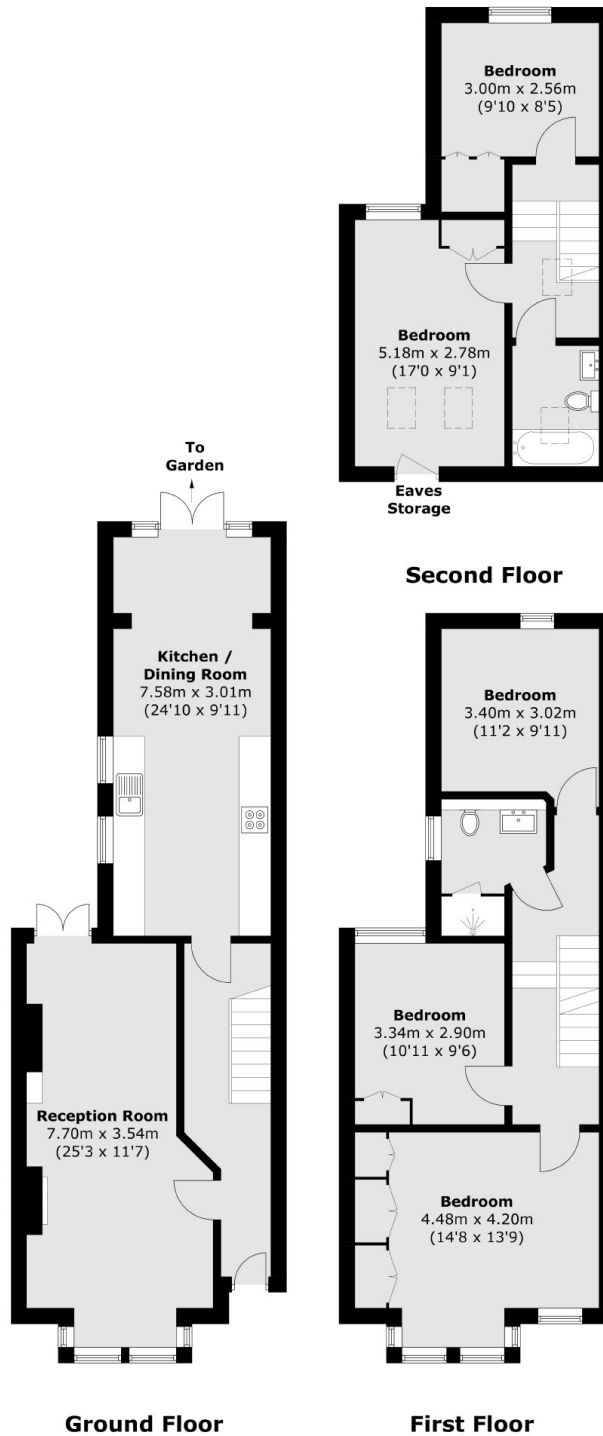
This five bedroom family home split over three floors has two bathrooms a spacious through lounge and a well sized eat in kitchen diner area with views out onto the rear garden. The house has recently undergone refurbishment making it ideal for families who want a well presented home.

Richmond Road is a small cul-de-sac off Long Lane in the heart of East Finchley Village being within a five minute walk of local shops and schools and within half a mile to East Finchley tube station (Northern Line).

### Features

- Five Bedrooms
- Two Bathrooms
- Refurbished
- Kitchen Diner
- Fireplace Features
- Loft Conversion

Richmond Road,  
London, N2



Total area (approx.): 141.8 sq. m (1,526.3 sq. ft)