



## Royal Drive, N11

£500,000

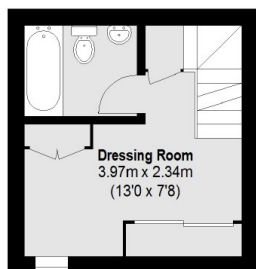
This truly outstanding three bedroom split-level penthouse flat situated in the original tower and flooded with natural light with a unique layout and dual aspect living area benefiting from direct access to an impressive roof terrace, ideal for entertaining with views across the London skyline.

Princess Park Manor is landmark development set in 30 acres of parkland and has 24-hour security. Nearby stations at New Southgate and Arnos Grove provide access into the City and West End with open green spaces at Friary Park, Arnos Park and Broomfield Park.

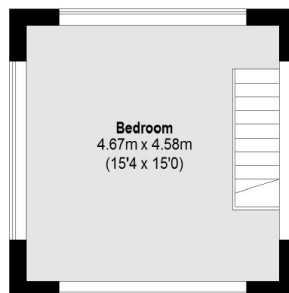
### Features

- Two Bedrooms
- Penthouse
- Roof Terrace
- Chain Free
- Gym, Spa and Tennis Courts
- Open Plan Layout

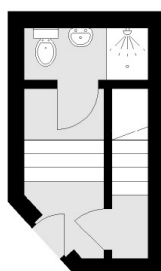
# Royal Drive, London, N11



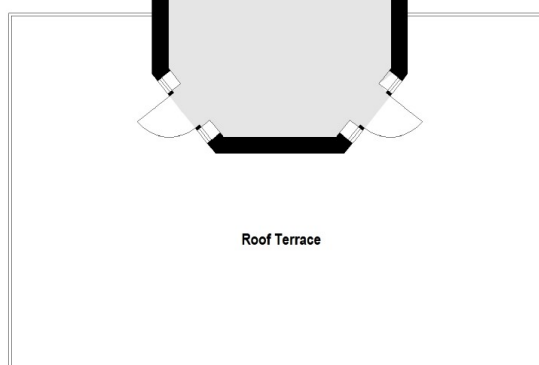
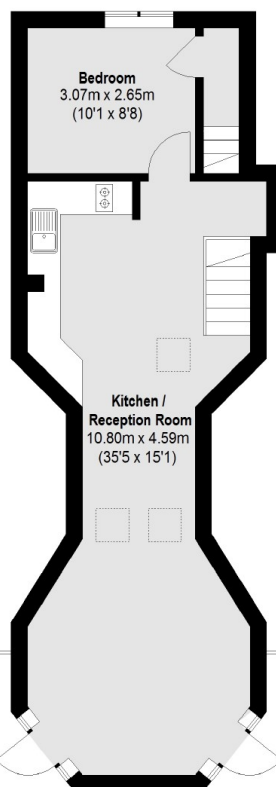
Third Floor



Fourth Floor



First Floor



Second Floor

Total area (approx.): 93.49 sq. m (1006 Sq. ft)  
Roof Terrace: 52.45 sq. m (565 Sq. ft)