



Priory Road, N8

£450,000

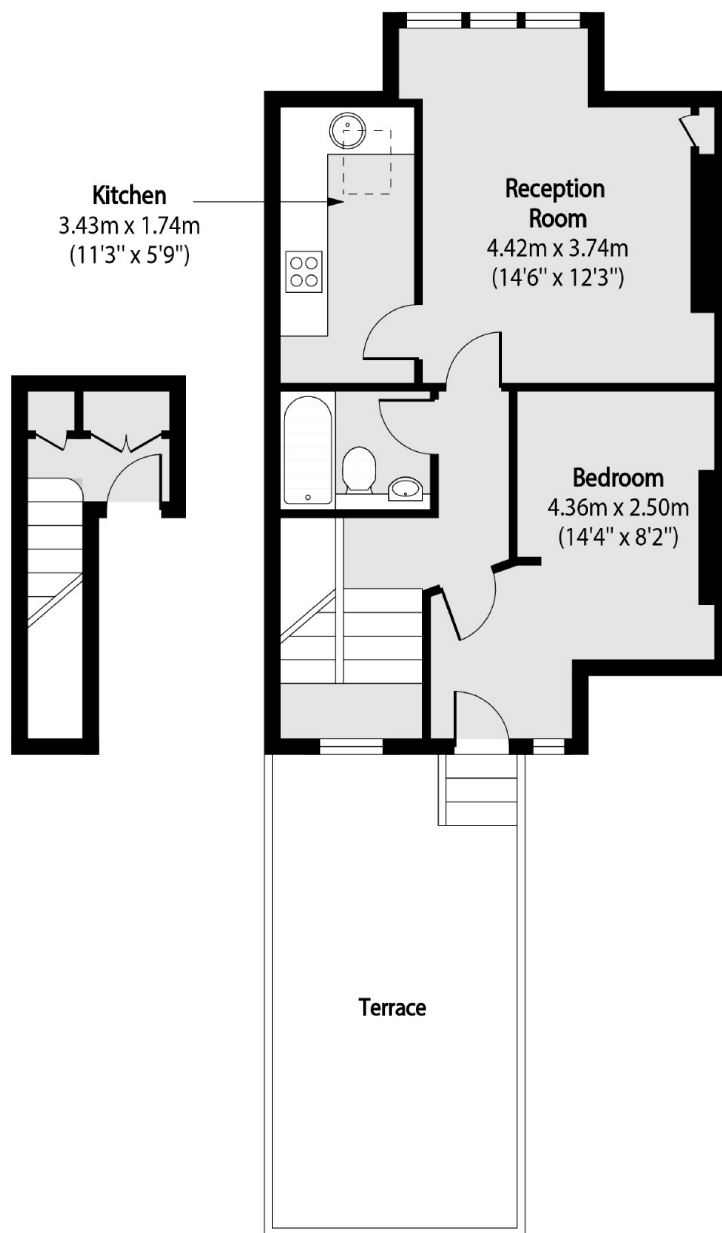
Presenting this bright and airy, split-level, first floor flat boasting separate kitchen and living areas and direct access out onto a south facing roof terrace ideal for all day sunshine with far reaching views over Priory Park. The flat comes with an extended lease, peppercorn ground rent and is being offered chain free.

Priory Road is a stones throw from Priory Park with tennis courts, cafe, playground and paddling pool. Alexandra Palace is within walking distance along with local schools and easy access to Crouch Ends Broadway known for a variety of shops, restaurants and Cinema. There is also fast line direct access to Moorgate via Hornsey Station.

Features

- One Bedroom
- Offers In Excess Of
- South Facing Roof Terrace
- Extended Leasehold
- Peppercorn Ground Rent
- Chain Free

Priory Road, London, N8



First Floor
Entrance

Second Floor

Total area (approx): 49.22 sq m (530 sq. ft)

Terrace total area (approx): 18.60 sq m (200 sq. ft)

Dexters

Muswell Hill
418 Muswell Hill Broadway
London
N10 1DJ
Sales
020 8444 2388

Energy Rating: . We aim to make our particulars both accurate and reliable. However they are not guaranteed; nor do they form part of an offer or contract. If you require clarification on any points then please contact us, especially if you're traveling some distance to view. Please note that appliances and heating systems have not been tested and therefore no warranties can be given as to their good working order.

 **RICS** | Regulated
Estate Agent
and Letting Agent

dexters.co.uk