



## Wilton Road, N10

£1,050,000

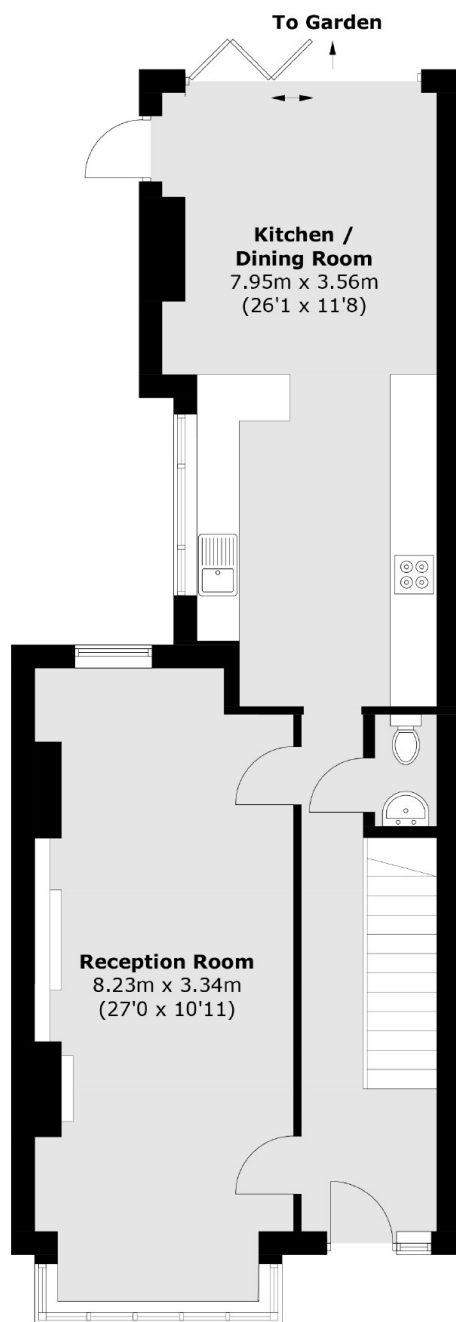
Presenting this end of terraced, post war family home with four original bedrooms, one bathroom, and guest WC. The property also offers off street parking, a well sized through lounge and a spacious open plan kitchen diner area with views via bi-folding doors out onto a luxury sized mature rear garden boasting 78 ft.

Wilton Road is located within the catchment of Coldfall primary and Fortismere secondary schools and situated between Colney Hatch Lane and Coppetts Road with bus services on either side of Wilton Road along with easy access to Muswell Hill Broadway, Muswell Hill playing fields and Halliwick recreation grounds.

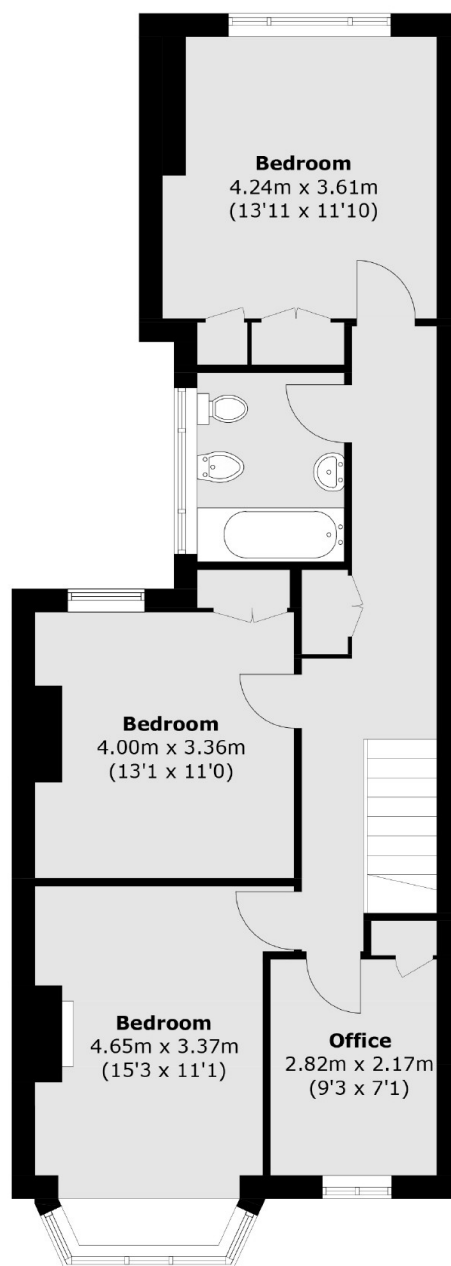
### Features

- Four Bedrooms
- North West Facing Garden
- Through Lounge
- Kitchen Diner
- Potential to Extend to Rear
- Chain Free

# Wilton Road, London, N10



**Ground Floor**



**First Floor**

Total area (approx.): 130.2 sq. m (1,401.4 sq. ft)