

## Alexandra Road, N10

### £325,000

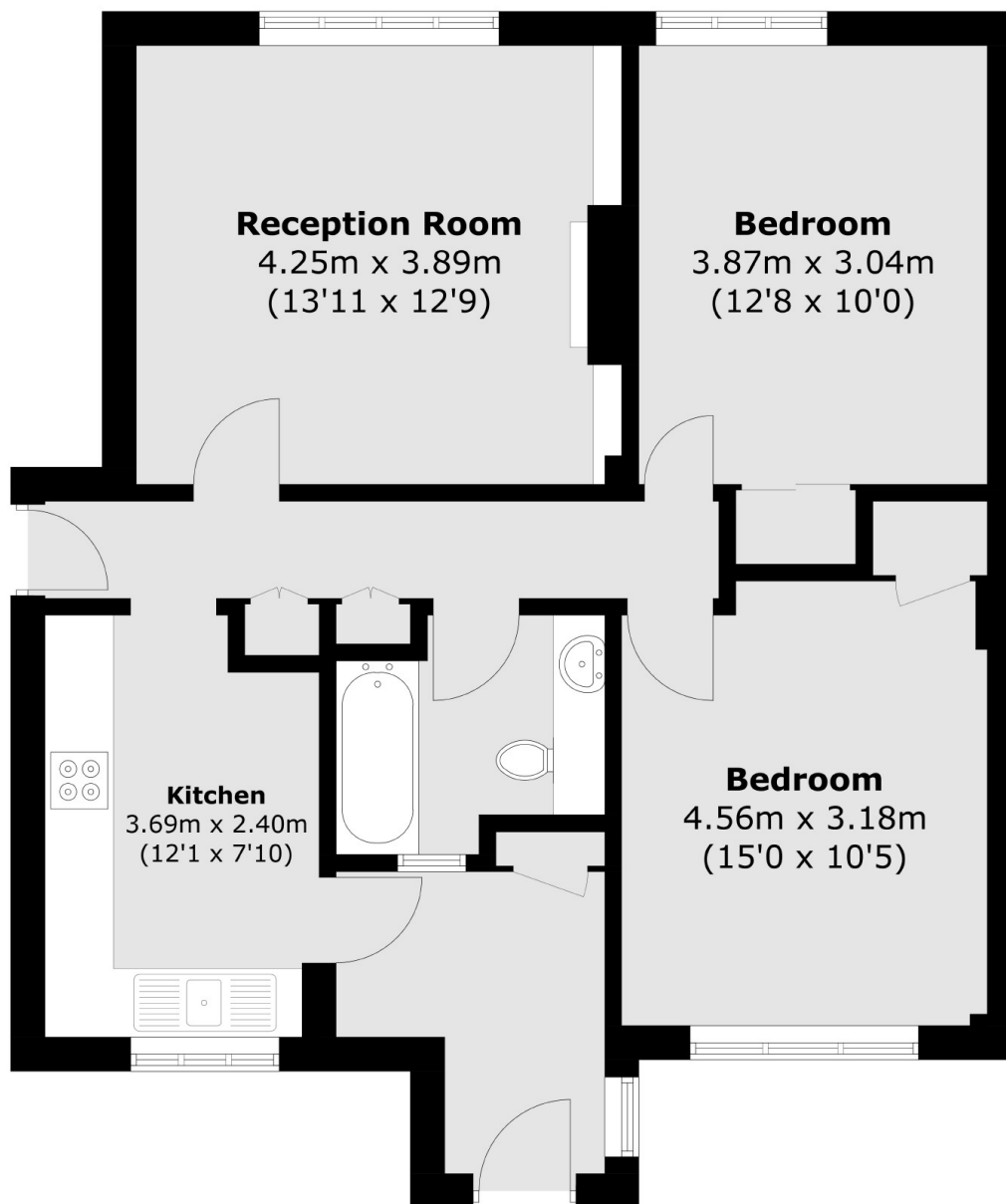
Set on the ground floor of this purpose built block, is a spacious two double bedroom flat boasting great natural light throughout and allocated parking for residents to the rear. This flat is ideal for first time buyers, buy to let investors and down sizers who no longer want stairs.

Located on the north side Muswell Hill, this property benefits from walking distance to local shops and transport links. It is also well located close to several popular schools.

### Features

- Ground Floor
- Allocated Parking
- Two Bedrooms
- Double Glazing
- Outstanding School Catchment
- Chain Free

# Alexandra Road, London, N10



Total area (approx.): 70.2 sq. m (755.6 sq. ft)