



Elms Avenue, N10

£675,000

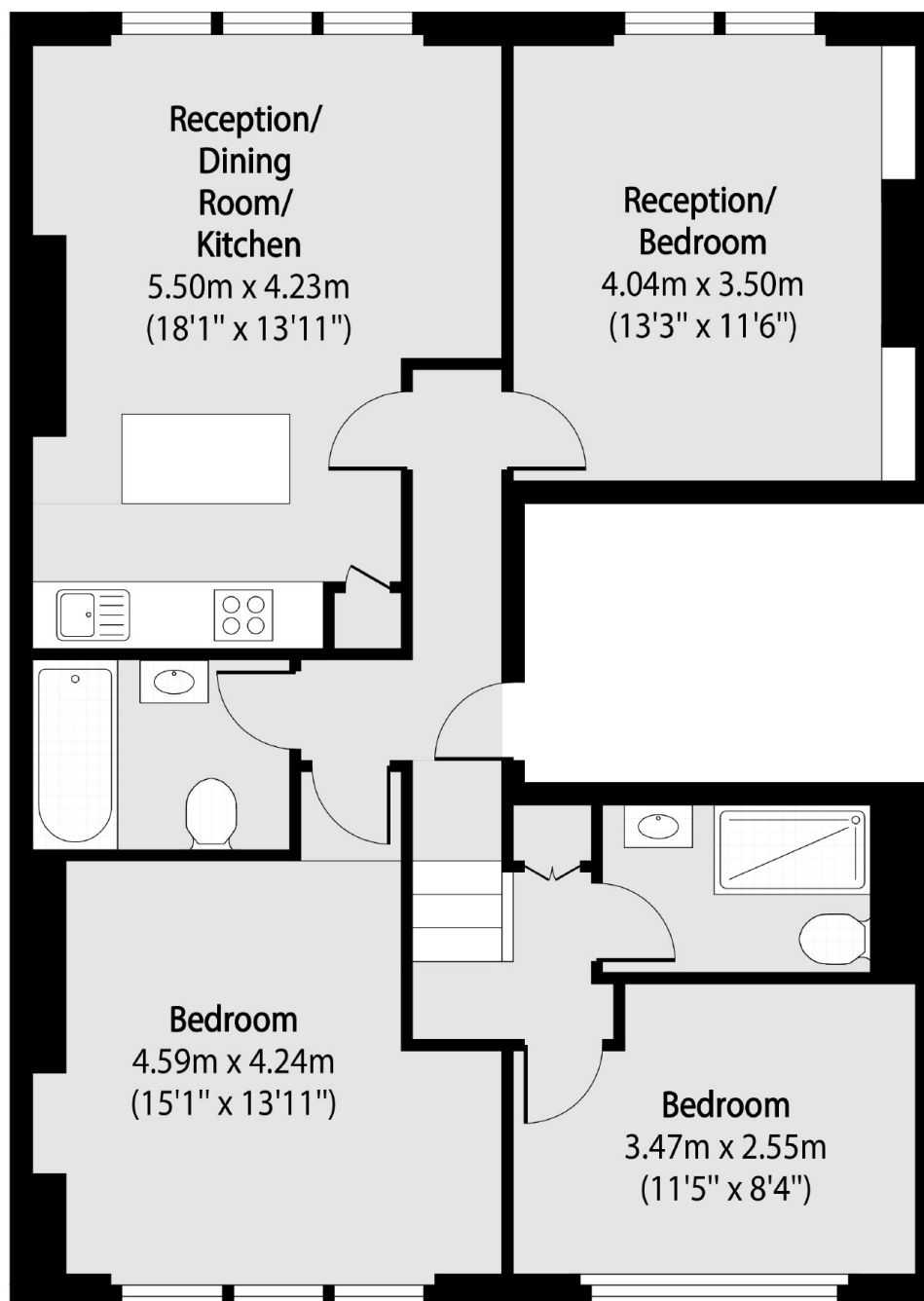
A great opportunity to acquire a stunning Edwardian first floor conversion with the special advantage of being a three bedroom or a two bedroom flat according to your personal needs. With standout high ceilings, two bathrooms and a wealth of period features, as well as a long lease, this flat is a strong contender for active buyers.

Elms Avenue is a sought-after road, close to the shops, cafes and restaurants in Muswell Hill. Nearby schools include Muswell Hill Primary and Fortismere Secondary. There is a wealth of green spaces such as Highgate Wood, Queens Wood, Alexandra Palace and the Parkland Walk. Transport links include Highgate Tube and Alexandra Palace B.R.

Features

- Three Bedrooms
- Two Bathrooms
- First Floor
- Outstanding School Catchment
- Open Plan Kitchen and Living
- Period Features

Elms Avenue, London, N10



Total area (approx): 76.19 sq m (820 sq. ft)