



Muswell Hill Road, N10

£500,000

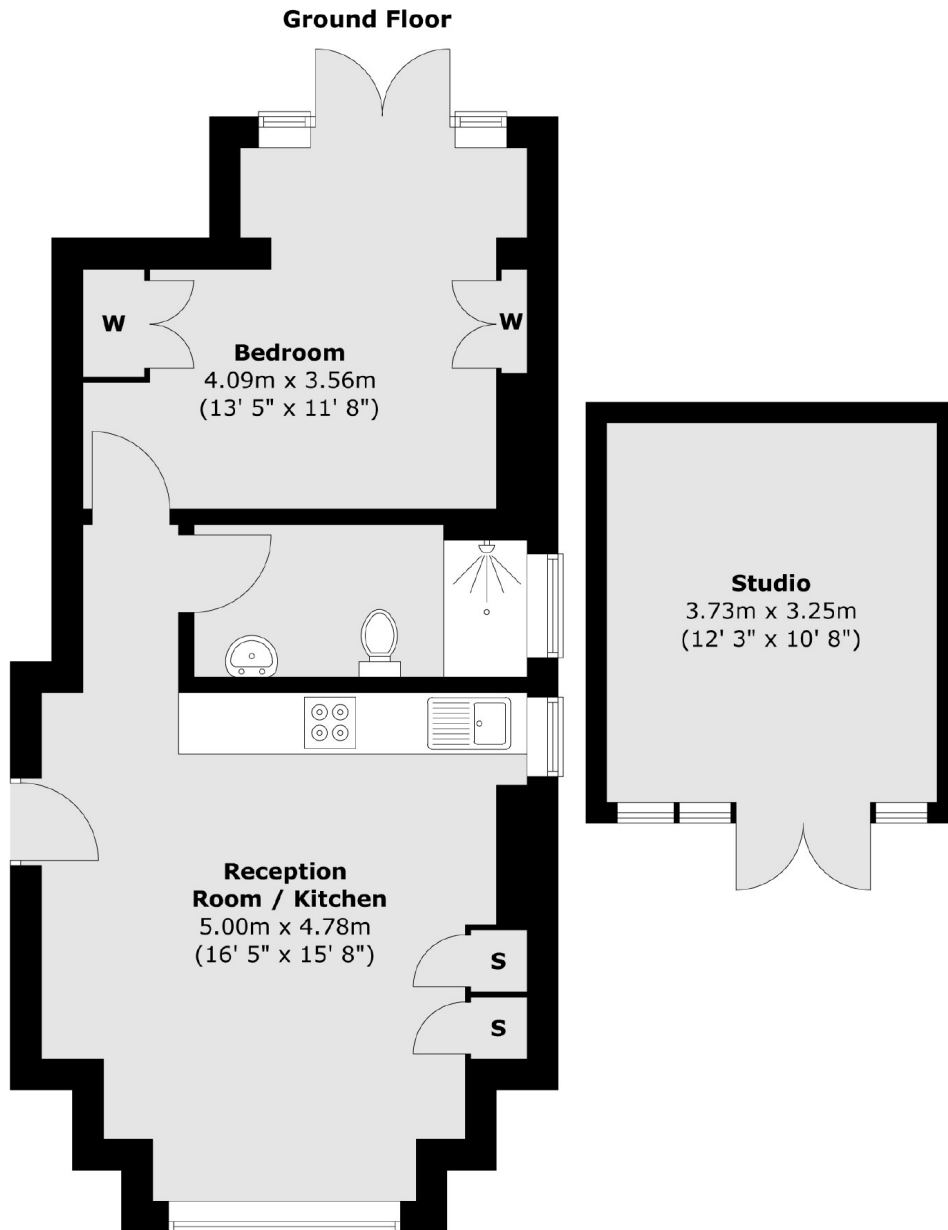
An impressive Edwardian conversion in the heart of Muswell Hill. This charming one bedroom flat has a fantastic open plan kitchen / living area and a large principal bedroom that leads onto a sizeable private garden.

Muswell Hill Road, with access to Highgate Wood, connects Highgate tube to the multiple facilities of Muswell Hill Broadway including its selection of boutique shops and restaurants.

Features

- Large Private Garden
- Fantastic Condition
- Edwardian Conversion
- Ground Floor
- Big Bathroom
- Separate Studio

Muswell Hill Road, London, N10



Total area (approx.) : 43.7 sq. m (470 sq. ft)
Total studio area (approx.) : 12.2 sq. m (131 sq. ft)