



## Torrington Gardens, N11

£925,000

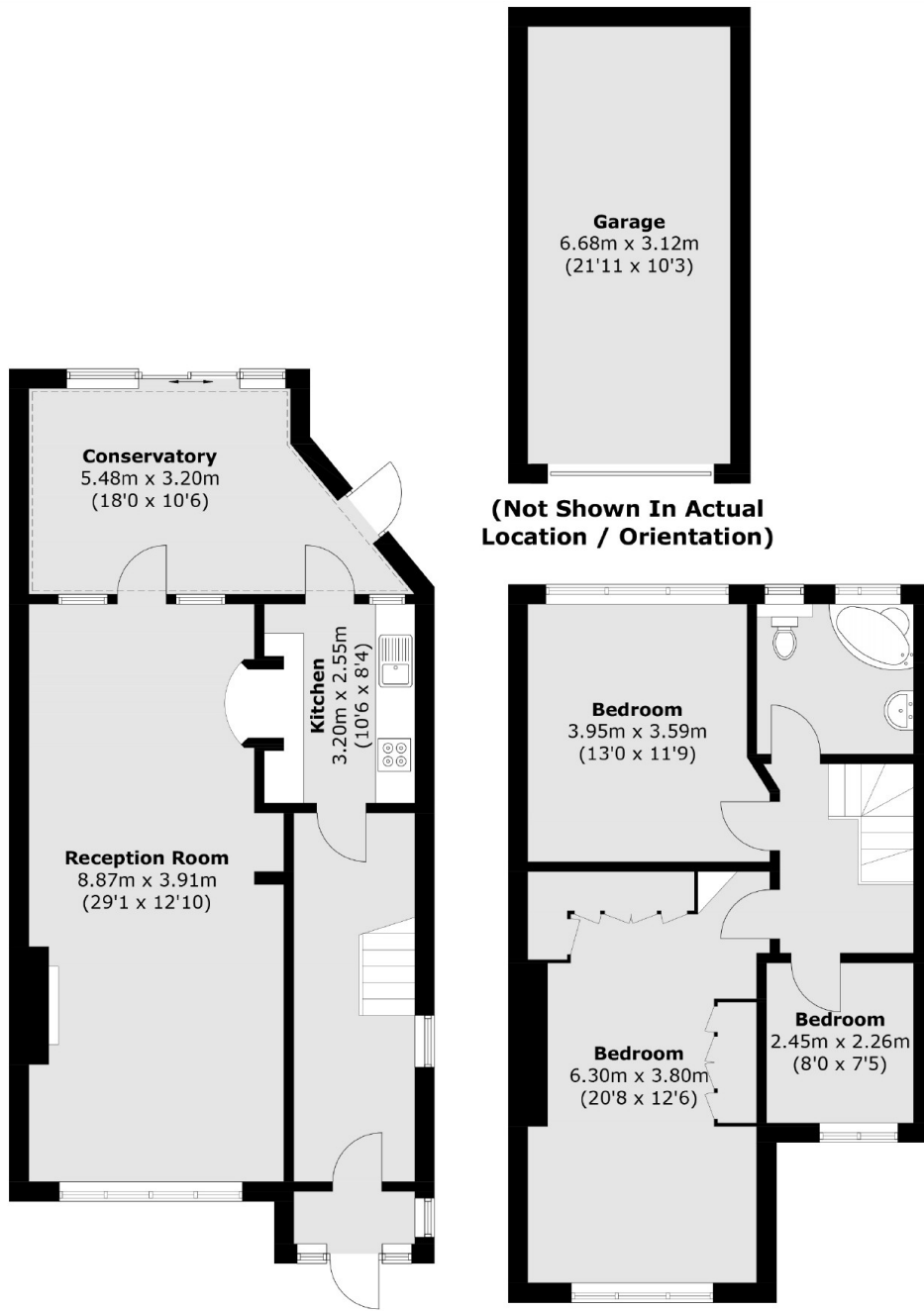
Located on a quiet street is this three bedroom, semi-detached house with potential to extend both at the rear and into the loft (STPP). This charming property offers a large, south facing garden, as well as a garage and a shared driveway. A spacious through lounge and separate kitchen can be found on the ground floor and three bedrooms with family bathroom on the first floor.

The property is situated near a selection of shops and amenities with Bounds Green underground station within walking distance along with other reliable transport links. Torrington Gardens has easy access to the A406, A10 and M1.

### Features

- Three Bedrooms
- South Facing Garden
- Off Street Parking
- Potential To Extend
- Garage
- Semi-Detached

# Torrington Gardens, London, N11



(Not Shown In Actual  
Location / Orientation)

## Ground Floor

## First Floor

Total area (approx.): 125.6 sq. m (1,351.9 sq. ft)  
Garage (approx.): 20.8 sq. m (223.9 sq. ft)