



## Crescent Rise, N22

£1,300,000

A four bedroom, two bathroom 1920s charming family home which has been beautifully restored by the owner in an art deco style and features many unique touches.

Located in an enviable location next to Muswell Hill and Alexandra Palace, close to Bounds Green underground and Alexandra Palace Overground stations with a choice of highly rated schools in the local area.

### Features

- Four Bedrooms
- Front and Rear Gardens
- Open Plan Kitchen Dining
- Bespoke Wooden Kitchen
- Impressive Primary Bedroom
- Beautifully Designed Interior





## Crescent Rise, N22

The ground floor is arranged with an extended kitchen dining room to the rear with fully integrated kitchen. This leads out to the rear garden. The living room to the front can be left open plan or used separately and has a gas fire. There is also a ground floor WC.

Across the first floor are two double bedrooms and one single bedroom as well as an elegant family shower room with large walk in shower and underfloor heating.

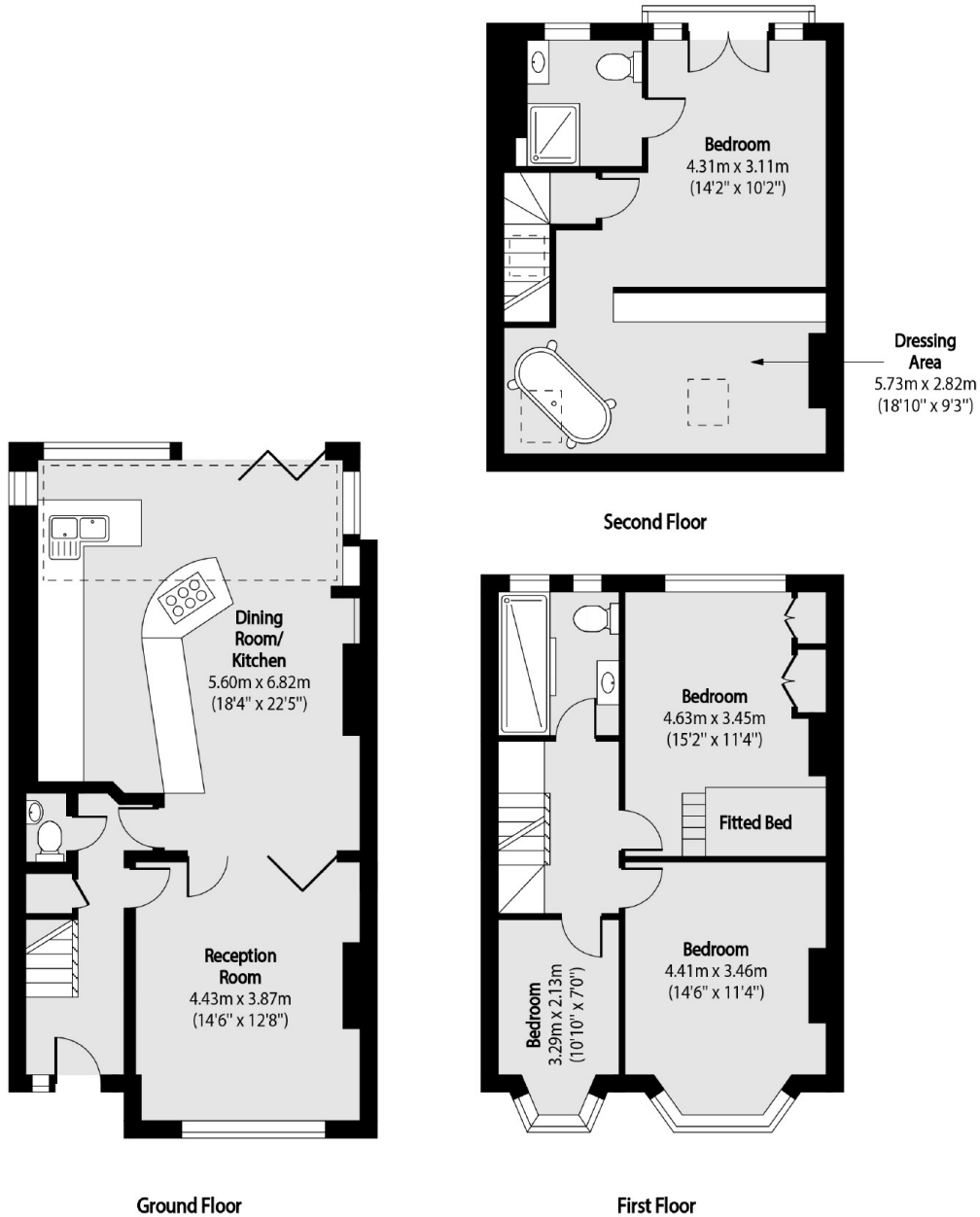
The impressive principal suite is located on the top floor with Juliette balcony, its own shower room with walk in shower, a walk in wardrobe/dressing area and a stylish freestanding copper bath.







# Crescent Rise, London, N22



Total area (approx): 151.65 sq m (1632 sq. ft)