



Albert Road, N22

£1,000,000

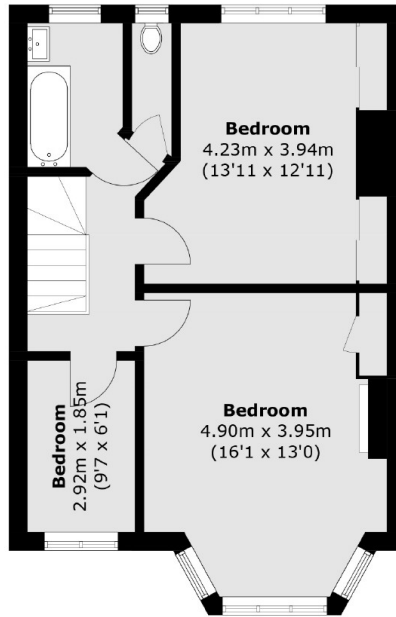
Situated within catchment area of outstanding local schools is this 1930s built, three bedroom end of terraced family home benefiting from a South-East facing rear garden, off street parking and a garage. The property has amazing potential to add value via extending to side, rear and loft while putting your own personal touch on refurbishment.

Nearby are the green spaces of Alexandra Palace with its mainline station providing easy access to the City. Bounds Green tube station (Piccadilly Line) is also within walking distance (0.6 miles).

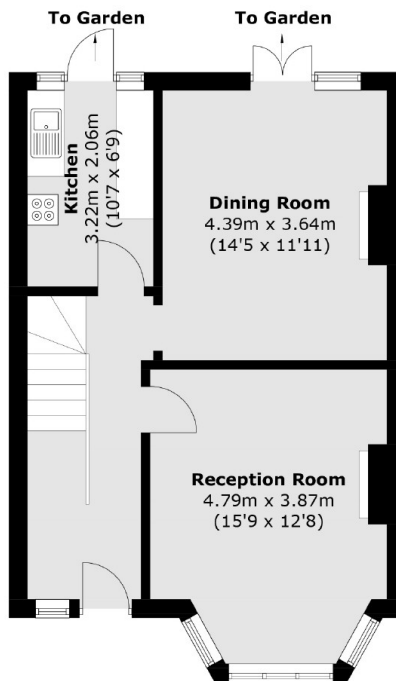
Features

- Three Bedrooms
- Garage
- In Need Of Refurbishment
- Potential To Extend (STPP)
- Semi-Detached
- Outstanding School Catchment

Albert Road, London, N22



First Floor



Ground Floor

Total area (approx.): 102.5 sq. m (1,103.2 sq. ft)