

Maidstone Road, N11

£450,000

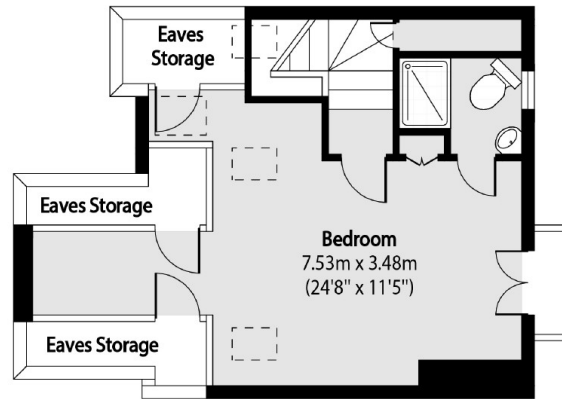
This bright duplex flat located on the first and second floor of a Victorian house offers two standout double bedrooms, a spacious lounge and a separate kitchen which boasts a Juliet balcony. The loft conversion accommodates a commodious bedroom and en suite bathroom.

Maidstone Road has excellent transport links via Bounds Green Underground Station (0.4 miles) And Bowes Park Overground Station (0.6 miles). You are also in close proximity to two outstanding primary schools; Bounds Green Infant School and Bowes Primary School.

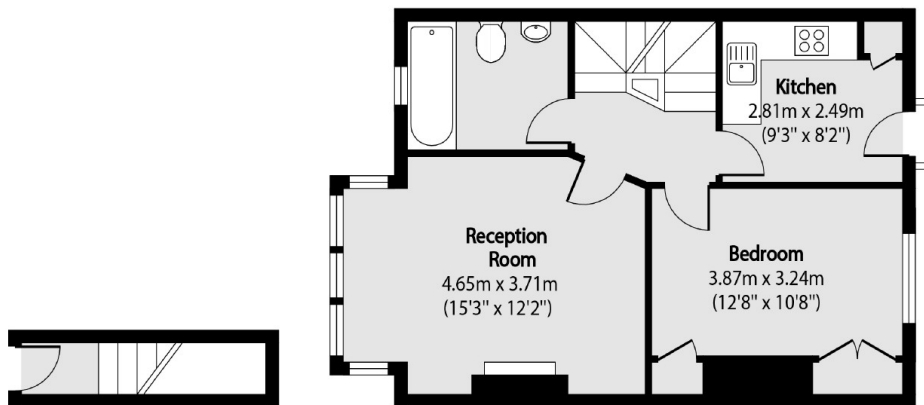
Features

- Two Double Bedrooms
- Share of Freehold
- Bright and Spacious
- Duplex Level
- First Floor
- Double Glazed Throughout

Maidstone Road, London, N11



Second Floor



Ground Floor
Entrance

First Floor

Total area (approx): 80.89 sq m (871 sq. ft)